



Building a Multi-Asset Gold-Silver Platform in Nevada.

Two district-scale projects
1.4Moz Au + 29Moz Ag
Fully funded 2026 catalyst pipeline

JULY 2026

TSXV: AUAU | OTCQX: AUXXF | FRA: RR7 | [A2Gold.com](https://www.A2Gold.com)

An aerial photograph of a mining site in a desert landscape. The terrain is reddish-brown and rocky. In the foreground, there are several pieces of heavy machinery, including a yellow excavator, a red crane, and a white truck. The background shows rolling hills and mountains under a blue sky with scattered clouds. The text 'Dominant Positions in Nevada's Premier Mineral Belts' is overlaid on the right side of the image.

**Dominant Positions
in Nevada's Premier
Mineral Belts**

Disclaimer

This presentation contains forward-looking information and statements, as defined by law including without limitation Canadian securities laws and the "safe harbor" provisions of the US Private Securities Litigation Reform Act of 1995 ("forward-looking statements"), regarding geological interpretations, potential timing and content of exploration programs, receipt of permits or property titles, joint venture agreements, financings, and similar topics. Generally, forward-looking statements can be identified by the use of forward-looking terminology such as "plans", "expects" or "does not expect", "is expected", "budget", "scheduled", "estimates", "forecasts", "intends", "anticipates" or "does not anticipate", or "believes", or variations of such words and phrases or state that certain actions, events or results "may", "could", "would", "might" or "will be taken", "occur" or "be achieved".

Forward-looking statements are subject to known and unknown risks, uncertainties and other factors that may cause the actual results, level of activity, performance or achievements of A2 Gold Corp. to be materially different from those expressed or implied by such forward-looking statements. Because forward-looking statements refer to events and conditions that have not yet taken place, they involve inherent risks and uncertainties, and reliance should not be placed on such statements. Some of the risks, uncertainties, and other factors that may cause actual results to be materially different from those expressed or implied by the forward-looking statements may include without limitation the ability to obtain regulatory, shareholder, and security exchange approvals; the ability to satisfy conditions precedent; the ability to obtain applicable exemptions from prospectus and registration requirements in connection with the listing or the issuance of securities of A2 Gold Corp.; the ability to complete milestones; the ability to obtain qualified workers, financing, permits, approvals, and equipment; changes in the commodity and securities markets; decisions respecting whether or not to pursue the transactions made by A2 Gold Corp. or the other parties with which A2 Gold Corp. is interacting; non-performance by contractual counterparties; and general business and economic conditions. Forward-looking statements are also based on a number of assumptions that may prove to be incorrect, which may include without limitation assumptions about: general business and economic conditions; that applicable approvals are obtained; that conditions precedent are satisfied; that exemptions are available and employable by A2 Gold Corp.; that milestones are completed; that qualified workers, financing, permits, approvals, and equipment are obtained; that market conditions continue; that decisions of A2 Gold Corp. and third parties are made that are in line with such forward-looking statements; that contractual counterparties perform their obligations as required; and that A2 Gold Corp. is able to locate sufficient financing for favorable ongoing operations.

The foregoing lists of factors and assumptions are not complete nor exhaustive, and A2 Gold Corp. undertakes no obligation to update any of the foregoing except as required by law. Most of the forward-looking statements contained in this presentation are collected from other disclosure sources of Columbus Gold Corp. and of A2 Gold Corp., including without limitation news releases, information circulars, technical reports, and other regulatory and securities exchange filings. A2 Gold Corp. recommends and expects that you will review the applicable forward-looking statement disclaimer language in such original sources for additional information on the forward-looking statements contained in this presentation.

Reference to gold resources are Inferred Resources. Please see NI 43-101 entitled Updated Resource Estimate And NI 43-101 Technical Report, Eastside and Castle Gold-silver Property, Esmeralda County, Nevada July 30, 2021.

EXECUTIVE SUMMARY



Two Large Scale Nevada Projects

Eastside + Taylor, both with district-scale potential and existing infrastructure



Major-Company Validation

Kinross 9.9% ownership + technical collaboration. Backed by Ingalls & Snyder, CALU Group, Eric Sprott



Large Existing Resource Base

1.4Moz Au + 8.8Moz Ag at Eastside. Taylor silver resource with significant expansion potential



Funded 2026 Drill Program

30,000m RC + 2,500m core drilling at Eastside. Taylor drilling to commence after closing



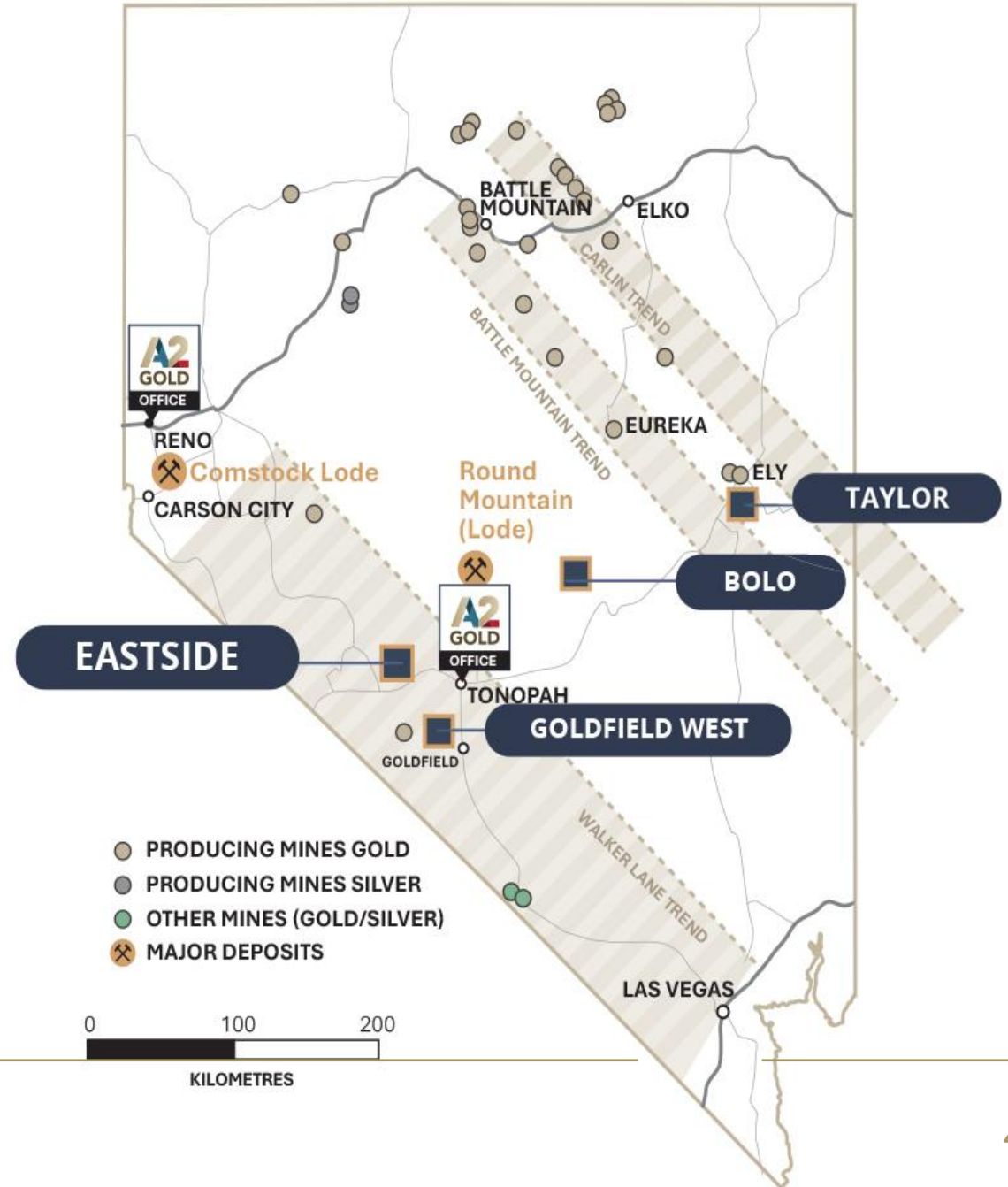
Clear Re-Rating Catalysts

Drill results and updated MREs. Taylor closing, metallurgy, and potential PEA on Castle Zone

Why Majors Care

- 1 **JURISDICTION**
Nevada, Tier-1 mining jurisdiction
- 2 **SCALE**
Multi-Million-Ounce District Potential
- 3 **DEVELOPMENT PATH**
Oxide, heap-leach with high-grade underground potential at Eastside
- 4 **UPSIDE**
Under drilled/tested high-grade feeder vein potential
- 5 **INFRASTRUCTURE**
Roads, power, water, labor
- 6 **STRATEGIC POSITION**
Walker Lane + Taylor district optionality

MINING COMPANIES IN THE AREA





Our Strategic Partner in Nevada



STRATEGIC PARTNERSHIP

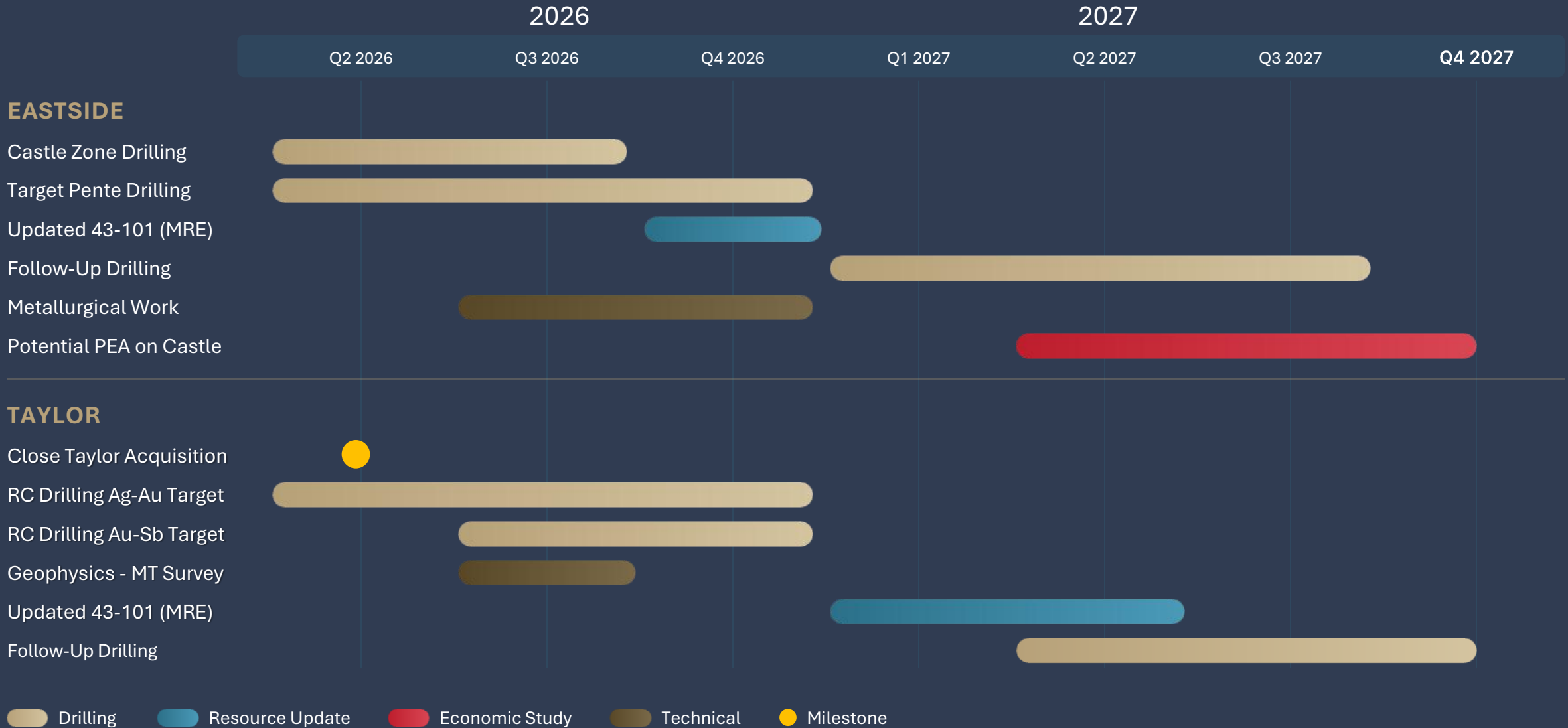
Kinross Gold owns a 9.9% stake in A2Gold and is a valued strategic advisor. Kinross has invested in various stages of A2's exploration programs

Kinross forms part of the A2Gold Technical Committee and meets at least once per quarter, sharing information across our projects

Kinross' Round Mountain Mine, the largest open pit gold mine in the world, is across the valley from Eastside with similar geological characteristics

A2Gold benefits from regular technical dialogue with Kinross and access to district-scale Nevada operating perspectives

Upcoming Catalysts



CAPITAL STRUCTURE

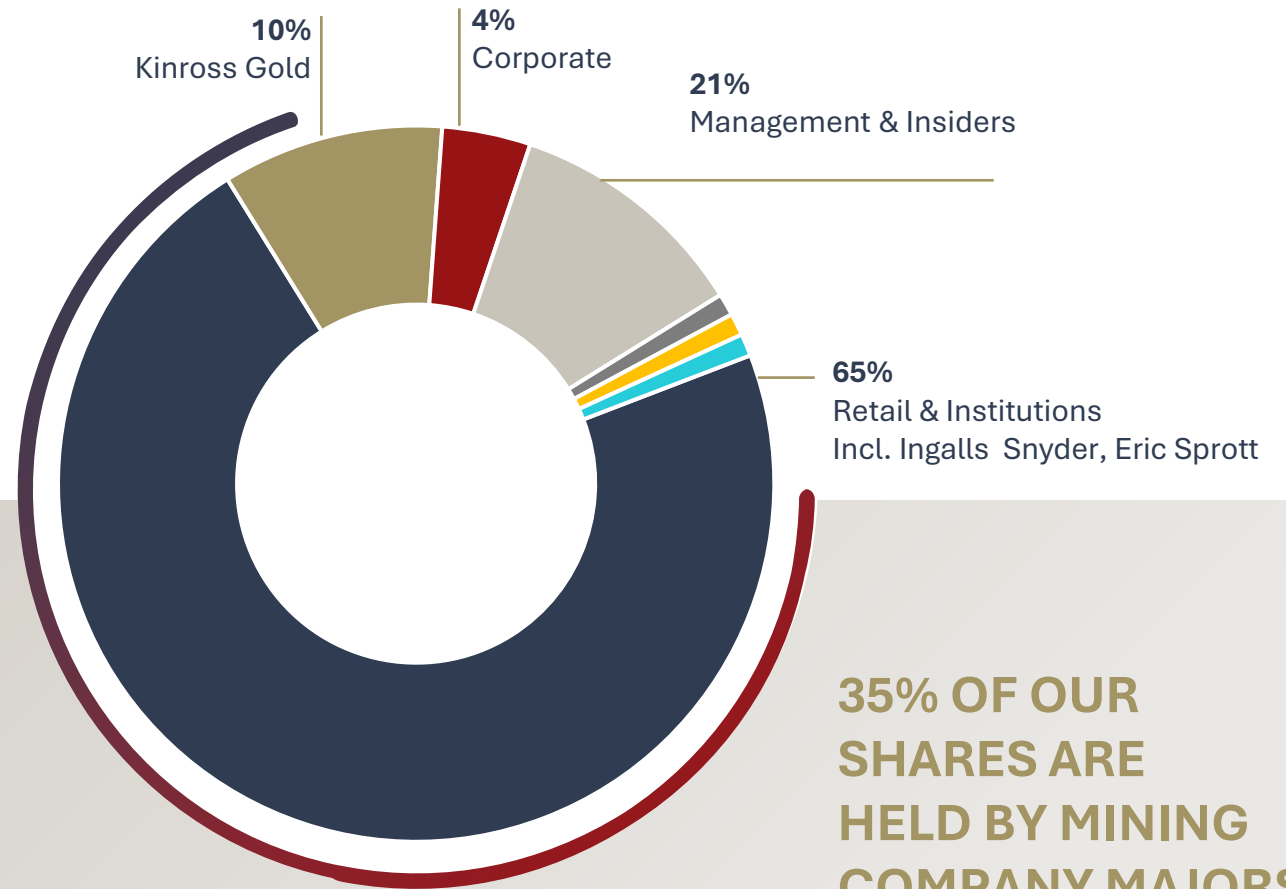
Strong Shareholder Base

TSXV:
AUAU

OTCQX:
AUXXF

February 2026

Common Shares	104,234,378
Warrants	15,759,022
Options	4,325,000
RSUs	3,310,000
Fully Diluted	127,628,400



35% OF OUR SHARES ARE HELD BY MINING COMPANY MAJORS AND INSIDERS

Strong Management Team & Board

A team that has made numerous discoveries and has put into production over 8 mines in the State of Nevada



Norm Pitcher
Chairman & Director

- Former President of Eldorado Gold
- Current Director of Ensign Minerals
- Former CEO & President of Mirasol Resources
- B.S. in Geology



Peter Gianulis
CEO & Director

- Former Partner of Salomon Brothers Hedge Fund Group
- Manager of Carrelton Asset Management
- 6 exits over 20 years including Hathor Exploration, CGA Mining and Northern Orion
- M.B.A. Cornell University with B.S. University of California at San Diego



Sean McGrath
CFO

- 20+ years experience in financial and capital markets in Canada
- Former CEO of Oregon Energy



Shawn Nichols
Director

- 30+ yrs experience including Sr. Investment Counsel & Assistant Corporate Secretary of Citibank Canada
- Former Director of Capital Markets – Scotia Bank
- Member of Law Society of Upper Canada



Javier Reyes
Director

- Led turn-around of Luca Mining in 2020-Present
- Founded Antares Capital and Credipresto. Former CEO of Accendo Banco
- Executive M.B.A. from Harvard University
- B.A. and Masters in Economics and Finance from ITAM (Mexico)

Technical Excellence

Nevada-Focused Technical Team Built for Discovery and Resource Growth



John Marma
VP Exploration

- 25+ yrs Nevada-focused geologist
- Multi-deposit expertise (Carlin, epithermal, porphyry)
- Ex-Hecla, Newmont, Klondex
- Midas Mine discoveries



Gabe Kassos
Chief Geologist

- 20+ yrs gold exploration & brownfields growth
- Ex-Equinox, Newmont, OceanaGold
- Carlin Trend & Long Canyon experience
- Proven mine life extension track record



Andy Wallace
Head Geologist

- Cordex Exploration (9 Nevada discoveries)
- Key deposits: Marigold, Lone Tree
- Full mine lifecycle experience
- Major contributor to U.S. gold output



Pete Chapman
Sr. Geologist

- Supports targeting & drill execution
- Geological modeling & interpretation
- Contributes to resource growth



Jon Vinson
Logistics Manager

- Leads field operations & drill programs
- Manages teams & contractors
- Executes exploration strategy

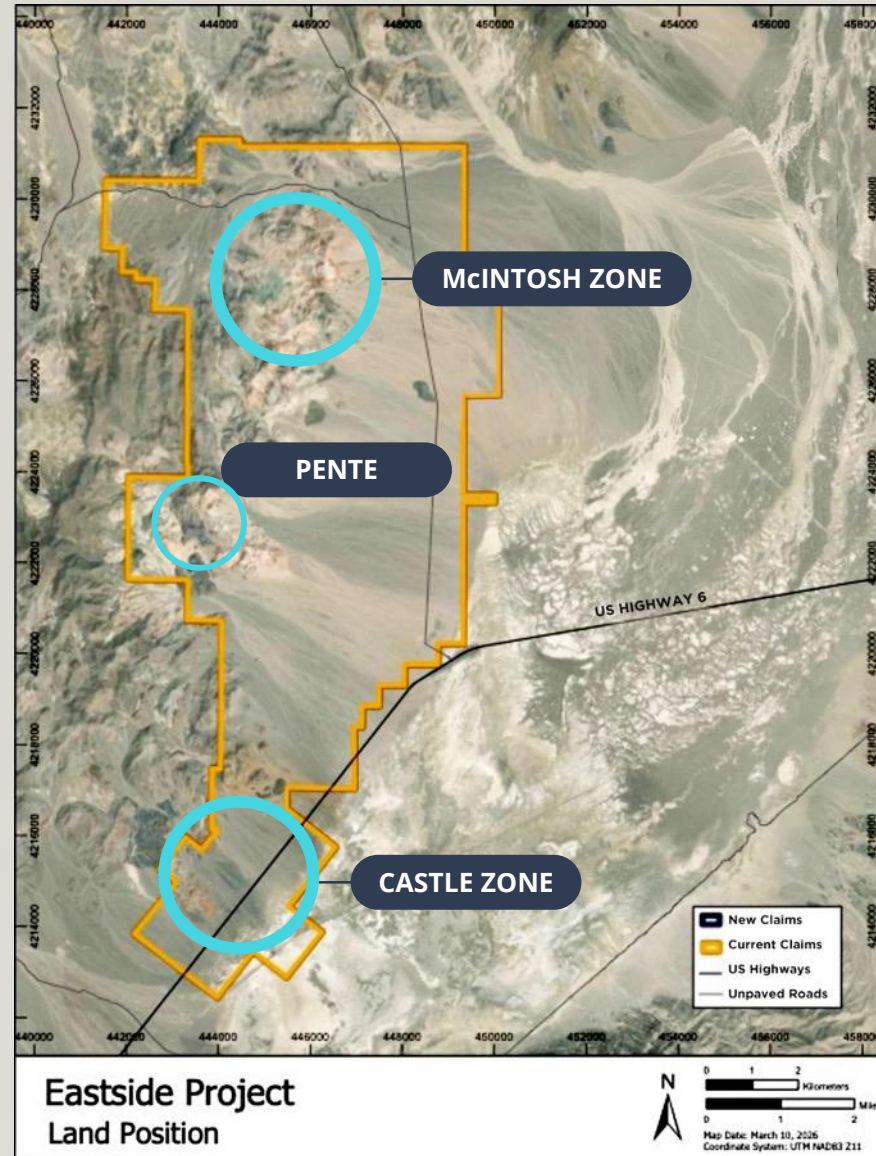
Eastside Project

100%
Owned

92 km²
Project area

Contains inferred resources of:
1.4 million oz gold
8.8 million oz silver
with material resource upside

- 70,000m historical drill database
- Oxide, open-pit heap-leach and underground high-grade feeder vein potential
- Less than 20% of district tested
- **Two identified resource areas** known as the McIntosh zone and the Castle Zone
- **Major RC and Core Drill Program** underway



EASTSIDE PROJECT

McIntosh & Castle

McINTOSH — RESOURCE & SCALE

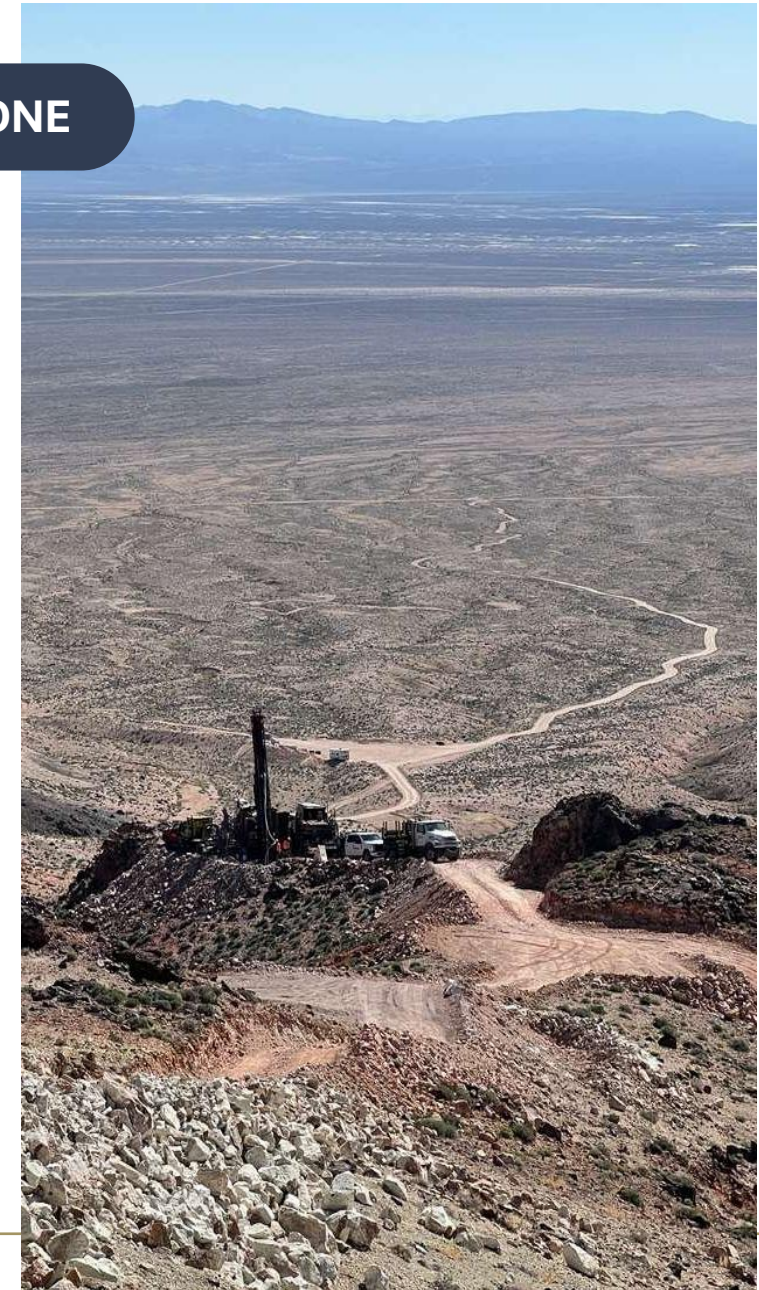
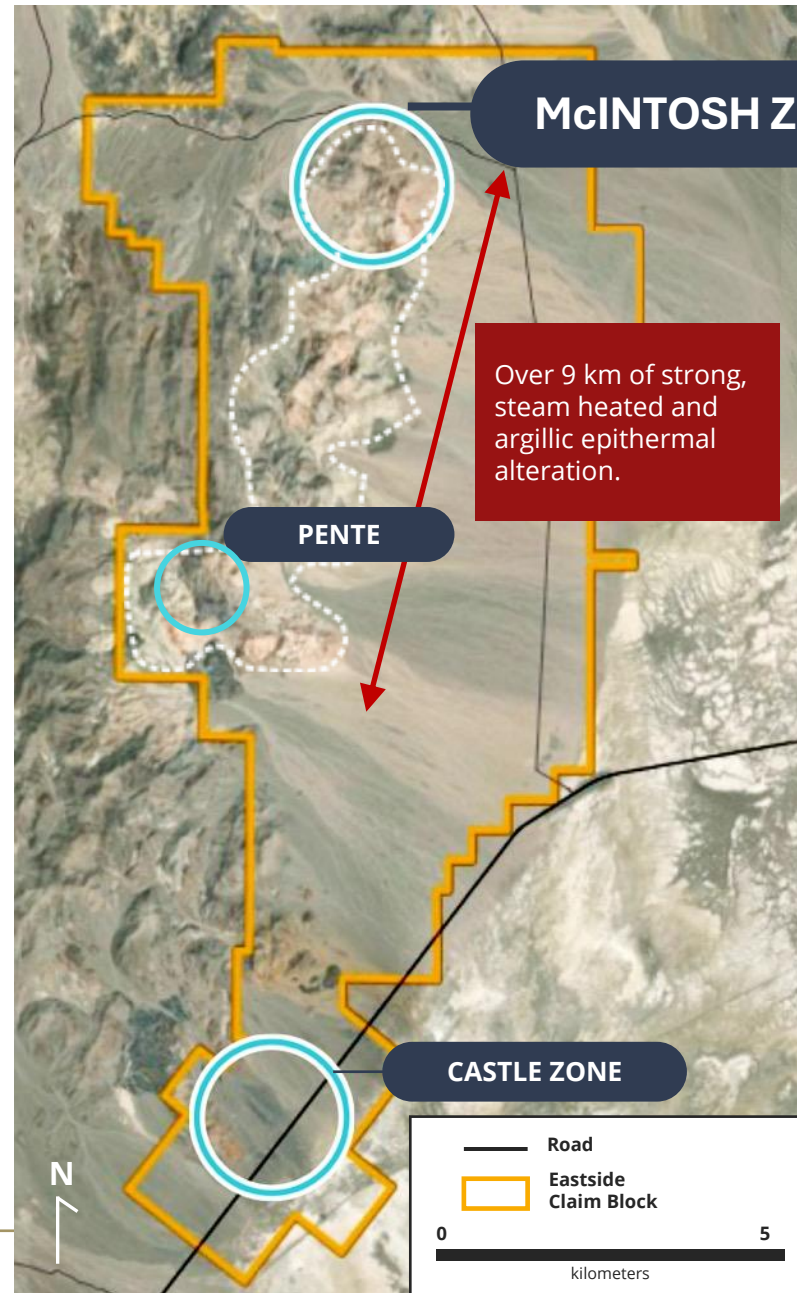
- Inferred: 61.7Mt @ 0.55 g/t Au, 4.4 g/t Ag
- Containing 1.09Moz gold and 8.7Moz silver
- Open in all directions and at depth
- Deeper drilling: stronger quartz veining, higher grades

Key Drill Highlights

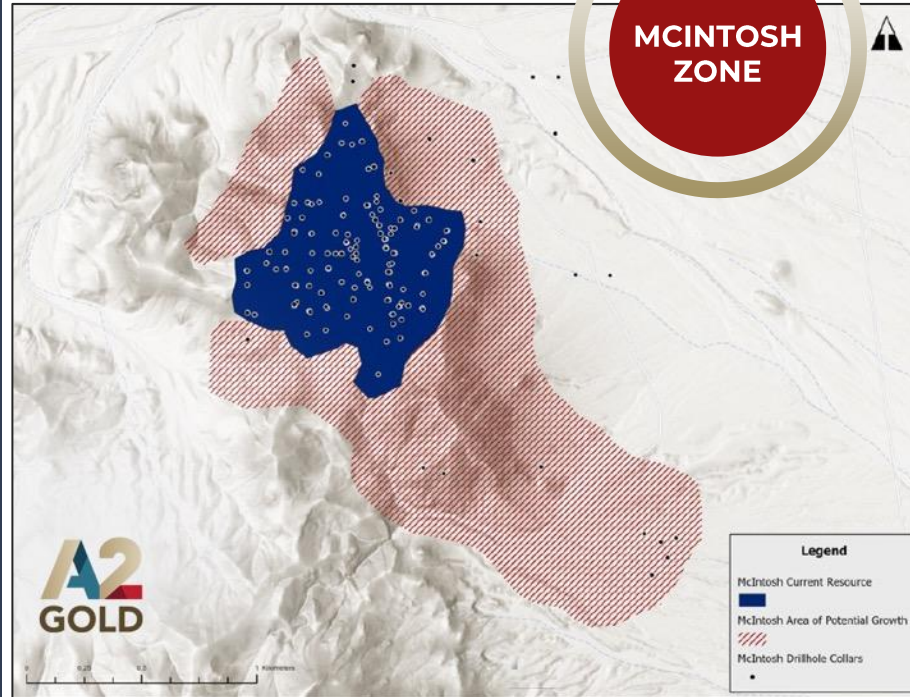
- 148m @ 2.6 g/t Au (incl. 14m @ 21.9 g/t Au)
- 3m @ 39 g/t Au • 15.2m @ 3.4 g/t Au

CASTLE — RESOURCE & EXPLORATION

- Inferred: 19.9Mt @ 0.49 g/t Au (314koz gold)
- Second defined resource zone at Eastside
- Southern district, oxide gold system
- Low Strip ratio/Mineralization at surface
- Expansion of mineralized corridors

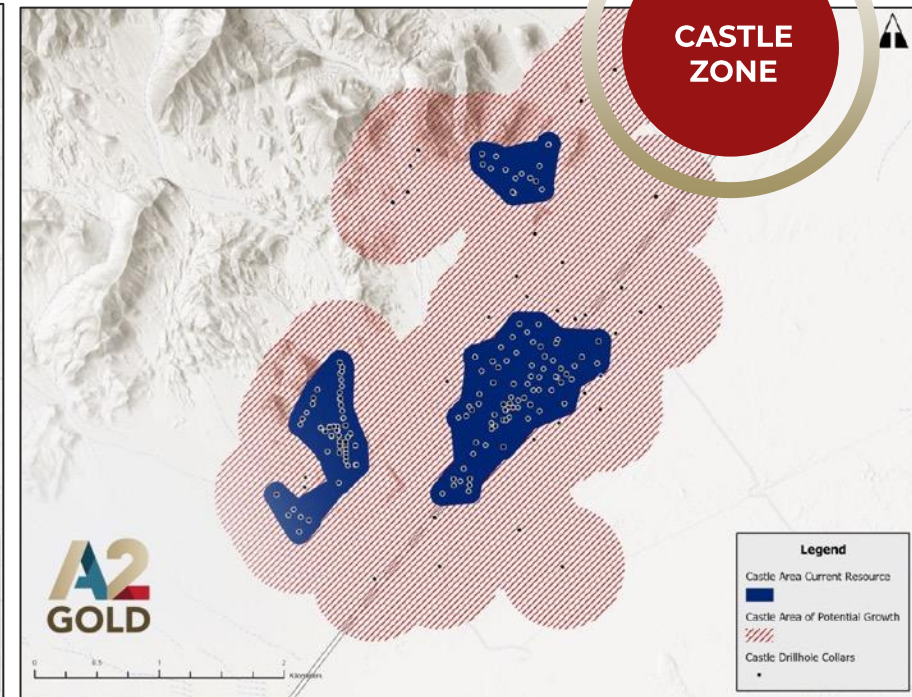


Exciting New Gold/Silver Discoveries in the Walker Lane



High Grade Zone discovered in late 2021:
Hole 243 – 2.6 g/t over 148 m (including 21.9 g/t over 14m)
Hole 239 – 39 g/t over 3m at bottom of hole
Hole 245 – 3.4 g/t over 15.2m

Gold and silver deposit defined over 1.5 km in a north-south direction, 700m wide (east-west) and 500m in vertical extent.



The Castle Zone lies at the south end of the Eastside Project and contains the abandoned Boss Mine and the undeveloped Boss, Berg, Black Rock and Castle Deposits

With the significant silver discovered in recent drilling, silver will play an important role in the future development of Castle

Taylor Project

- 117-sq km land package in Tier-1 Nevada jurisdiction
- Permitted and bonded to drill
- Water rights, electricity and substation, robust road network



WHY WE ACQUIRED TAYLOR?

Gold & Antimony Potential

- Internal gold estimate of ~100k AuOz
- Surface Au mineralization +0.1 g/t over 10 km
- Shallow and oxidized

Silver Resource Growth

- NI 43-101 Mineral Resource of +20M AgOz (SRK 2018)
- Open in all directions
- Shallow and pre-stripped pit

High-Grade CRD System

- Extensive surface signature of high-grade mineralization, like 187 oz/t Ag, 3.2% Cu, 6.1% Pb, 2.2% Zn, and 1.5% Sb
- Historic Ag-Pb-Zn production
- Untested at depth

Porphyry / Skarn Upside

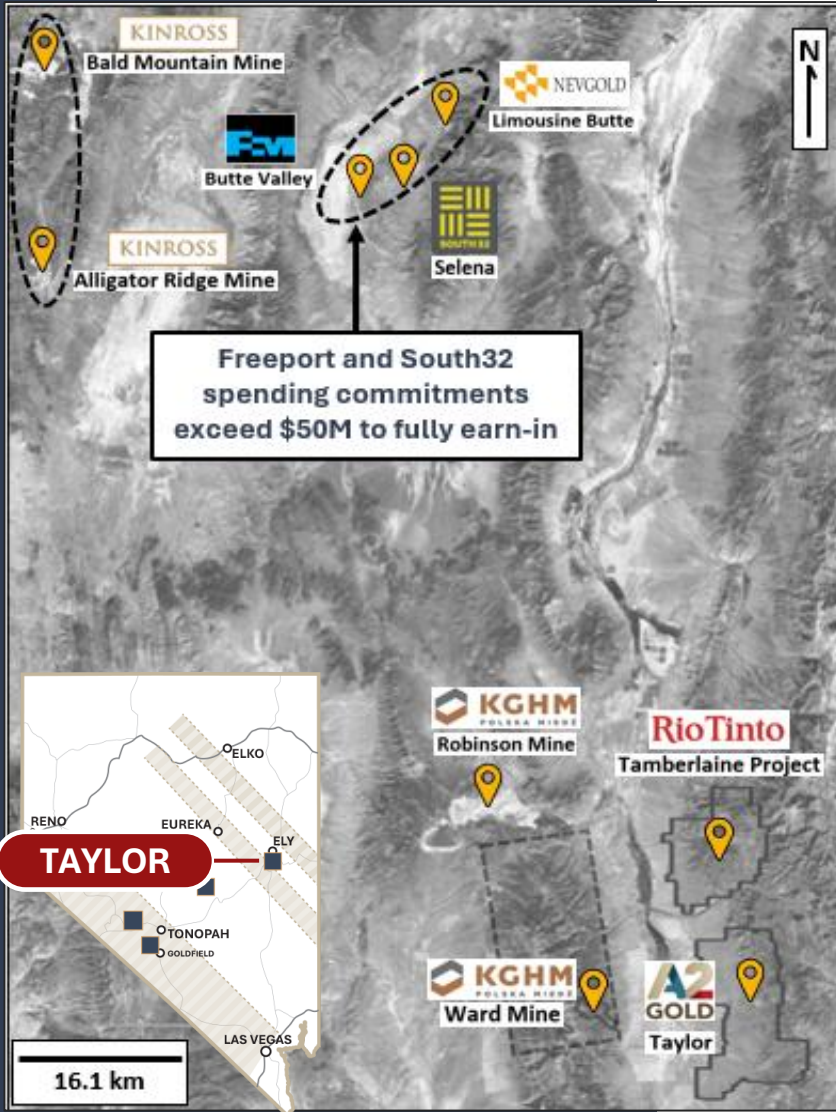
- Robust geophysical signatures supporting targets
- Multiple intrusive phases including Eocene and QSP altered Jurassic dikes some with Au-Cu-Hg bearing veinlets



Source: "NI 43-101 Technical Report on the Taylor Silver Project, White Pine County, Nevada" prepared by SRK Consulting (U.S.) Inc., Denver, Colorado, with an effective date of May 17, 2018. Mineral resources are reported using a silver price of US\$17/oz and a cutoff grade of 1.6 oz/ton Ag. Measured and Indicated Mineral Resources total 3,789,000 tons grading 2.89 oz/ton silver for 10,995,000 contained ounces of silver. Inferred Mineral Resources total 180,000 tons grading 2.91 oz/ton silver for 603,000 contained ounces of silver.

Taylor Project

NEIGHBOURING PROJECTS



KINROSS

Butte Valley

- Falcon Butte JV w/ Freeport-McMoRan
- Porphyry system likely drove mineralization at Selena and Limousine Butte

Bald Mountain & Alligator Ridge

- Historic production of Ag, Au, Cu, Sb and W
- Porphyry with distal CRD, >4M ounces of gold equivalent



Limousine Butt

- ~300k ounces of gold
- Distal gold mineralization; Devonian Guilmette – Mississippian Chainman



Butte Valley

- Falcon Butte JV w/ Freeport-McMoRan
- Porphyry system likely drove mineralization at Selena and Limousine Butte



Selena

- Ridgeline Minerals JV w/ South32
- CRD/skarn mineralization; Devonian Guilmette – Mississippian Chainman

RioTinto

Tamberlaine Project

- 2 miles north of Taylor, active exploration since 2017



Robinson Mine

- 13 miles northwest of Taylor, porphyry: Copper, gold, silver, molybdenum
- In production since 1867 with intermittent hiatuses, > 5B pounds of copper and >3M ounces of gold

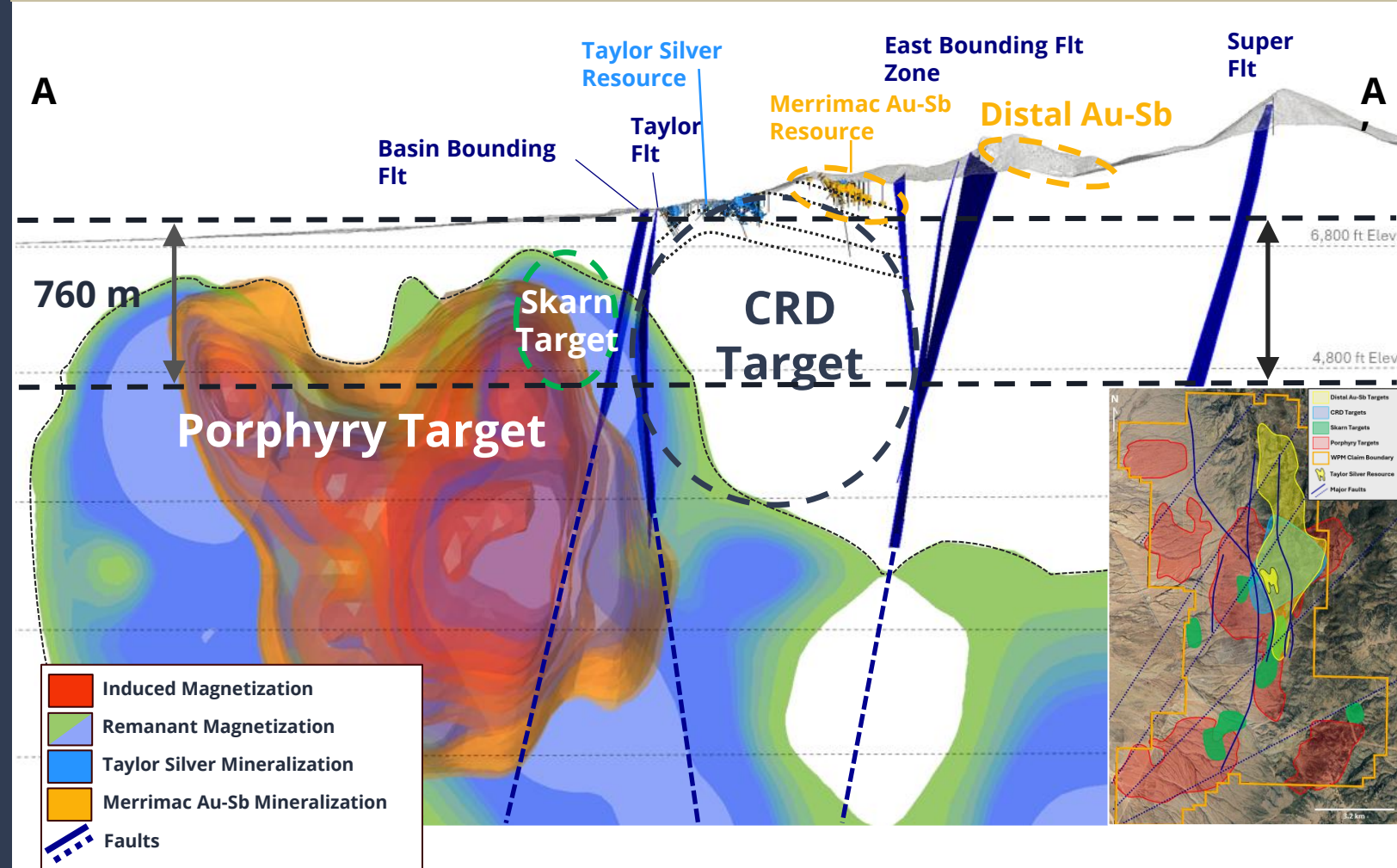
Ward Mine & South Egan Range

- 6 miles west of Taylor, intermittent production between 1866 to 1990's

Taylor Project

Shallow Potential for Distal Gold-CRD-Skarn-Porphyry

- Approximately 96% of historic drill holes have tested *only the upper 152 m*, leaving significant potential at depth
- Silver and gold-antimony mineralization is vertically zoned around anticline apex
- Approximately 1,370 m of favorable stratigraphy remains untested between and adjacent to known mineralization and the skarn-porphyry targets
- Potential for shallow porphyry mineralization to the west and at depth
- A variety of Eocene and Jurassic age dikes identified across the property



Investment Summary

1

Tier-1 Nevada Jurisdiction

Premier mining-friendly state with established infrastructure, clear permitting, and strong rule of law

2

Two District-Scale Assets

Eastside gold project + Taylor silver-gold acquisition providing diversified exploration upside

3

Significant Growth Potential

Existing resource base with multiple high-priority drill targets for near-term expansion

4

Fully Funded 2026 Program

Capital in place to execute aggressive drill campaign with no near-term financing required

5

Kinross Strategic Partner

Major gold producer ownership stake with technical collaboration and validation

6

Nevada-Focused Team

Experienced technical and management team with proven track record in Nevada gold exploration

7

Multiple Catalysts Ahead

Continuous news flow through 2026-2027 with drilling, resource updates, and development milestones

8

Value-Focused Management

Disciplined capital allocation with focus on per-share value creation for shareholders



A2 Gold Corp.
591 N. Main Street
Tonopah, NV USA, 89049

Email: info@A2gold.com



Thank You

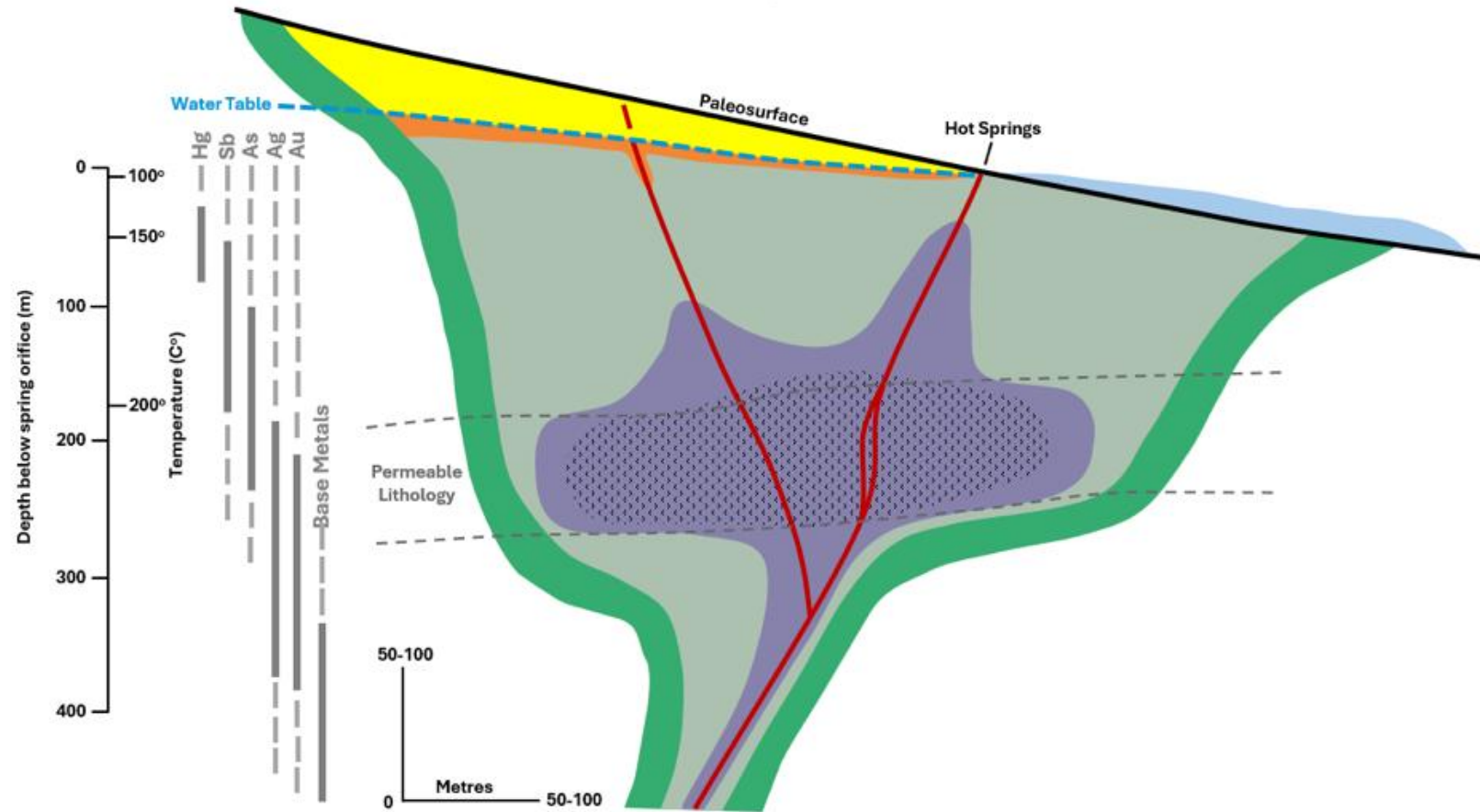
TSXV: AUAU | OTCQX: AUXXF | A2Gold.com

APPENDIX











Eastside Project

- Typically hosted in volcanic rocks
- Forms in shallow, low-temperature environments
 - 0-1.5 km depth; 150-300°C
- Strong structural controls
 - Veins, stockworks and breccias
- District alteration zones
 - Silica, adularia ± alunite surrounded by clay
- Metal zoning patterns
 - Au-Ag show vertical/lateral zoning with base metals increasing with depth
- “Bonanza” grade deposits
 - Can host high-grade Au-Ag veins



Alteration and Gold Distribution

<p> Steam Heated Alteration Kaolinite ± Alunite ± Opaline Silica ± Native S 0-0.01 ppm gold</p> <p> Silicified/Chalcedonic Blanket 0.01-1 ppm gold</p> <p> Sinter Terrace Facies Amorphous silica + <u>Biofacies</u> 0-1 ppm gold</p>	<p> High Grade Veins Crustiform and colloform banded quartz-carbonate veins ± adularia ± barite/fluorite ≥10 ppm gold</p> <p> Disseminated Low Grade Ore Zone 1-5 ppm gold</p> <p> Potassic Alteration Halo Illite-Adularia-Silica 0-1 ppm gold</p>	<p> Argillic Alteration Halo Smectite Mixed-layer Clay ± Chlorite <u>Typically</u> no gold</p> <p> Propylitic Alteration Halo Chlorite-Calcite ± Epidote <u>Typically</u> no gold</p>
--	--	---

Modified from Hedenquist et al. (2000); Buchanan (1981), Morrison et al. (1990) and Corbett & Leach (1997)

Taylor Project

DRIVEN BY MAGMATIC PORPHYRY CENTRE

Predictable zoned metal distribution

- Porphyry center (Cu-Au-Mo)
- Skarn development at intrusive-carbonate contacts; Typically, *high-grade* (Fe-Cu-Au-W)
- **Carbonate Replacement Deposits (CRD)** form along structures and lithological contacts (mantos and chimneys) (Ag-Pb-Zn-Cu±Au)
- Distal Gold ± Antimony occur at greatest distance as veins, jasperoid, breccias, or disseminated

Strong structural controls

- Regional faults and lithological contacts focus and localize mineralization

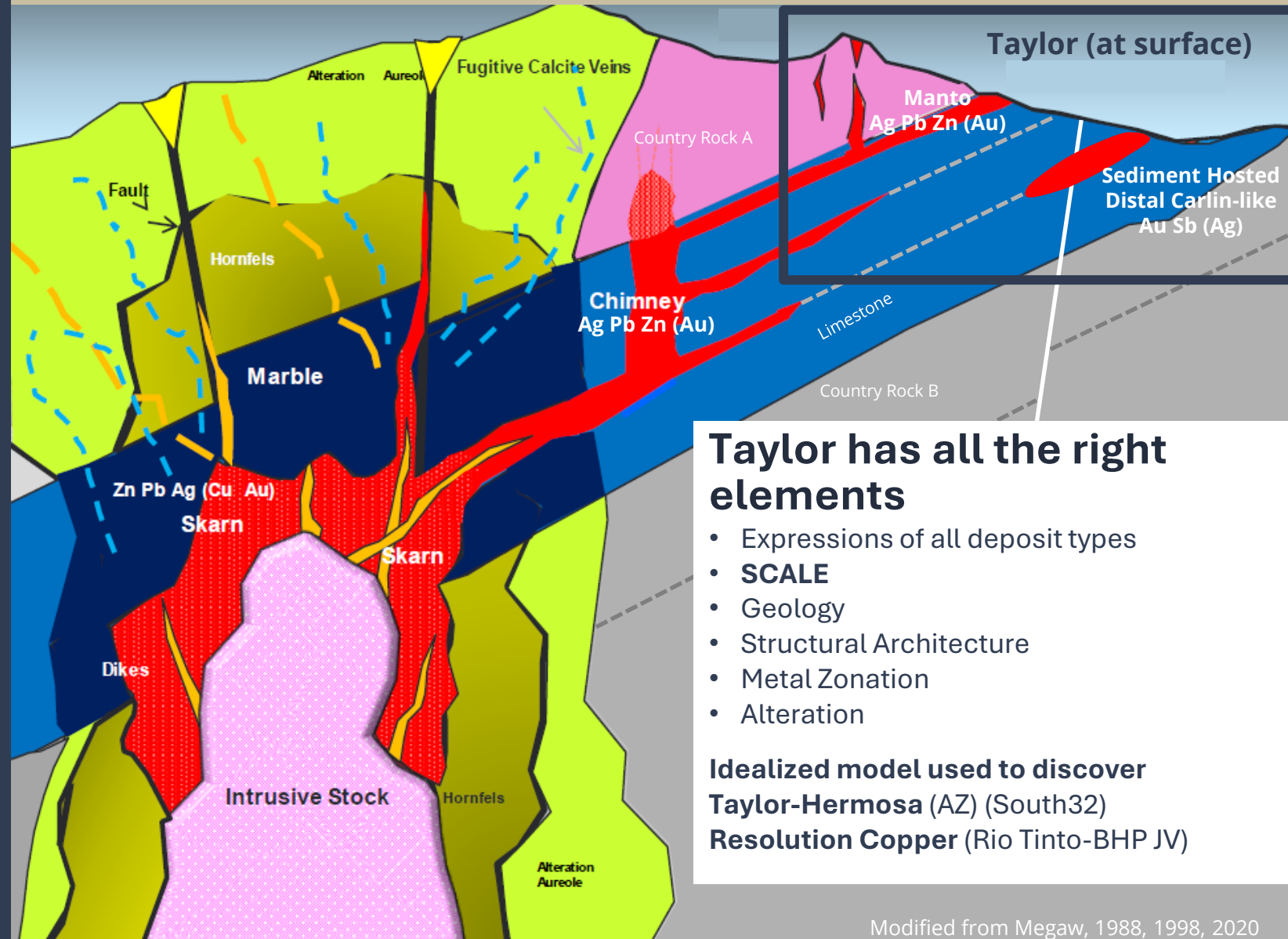
District-Scale Potential with large hydrothermal footprint

- Reactive carbonate rocks are critical for CRD and distal gold mineralization

Exploration and Vectoring

- Changes in metal ratios, alteration assemblages and structural pattern recognition key to vectoring

Idealized Distal Gold-CRD-Skarn-Porphyry Model



Taylor has all the right elements

- Expressions of all deposit types
- **SCALE**
- Geology
- Structural Architecture
- Metal Zonation
- Alteration

Idealized model used to discover Taylor-Hermosa (AZ) (South32) Resolution Copper (Rio Tinto-BHP JV)