



## Building a Multi-Asset Gold-Silver Platform in Nevada.

1.4M oz Gold | 19M oz Silver and Growing

APRIL 2026

TSXV: AUAU | OTCQX: AUXXF | FRA: RR7 | [A2Gold.com](https://www.A2Gold.com)



Dominant Positions  
in Nevada's Premier  
Mineral Belts

---

# Disclaimer

This presentation contains forward-looking information and statements, as defined by law including without limitation Canadian securities laws and the "safe harbor" provisions of the US Private Securities Litigation Reform Act of 1995 ("forward-looking statements"), regarding geological interpretations, potential timing and content of exploration programs, receipt of permits or property titles, joint venture agreements, financings, and similar topics. Generally, forward-looking statements can be identified by the use of forward-looking terminology such as "plans", "expects" or "does not expect", "is expected", "budget", "scheduled", "estimates", "forecasts", "intends", "anticipates" or "does not anticipate", or "believes", or variations of such words and phrases or state that certain actions, events or results "may", "could", "would", "might" or "will be taken", "occur" or "be achieved".

Forward-looking statements are subject to known and unknown risks, uncertainties and other factors that may cause the actual results, level of activity, performance or achievements of A2 Gold Corp. to be materially different from those expressed or implied by such forward-looking statements. Because forward-looking statements refer to events and conditions that have not yet taken place, they involve inherent risks and uncertainties, and reliance should not be placed on such statements. Some of the risks, uncertainties, and other factors that may cause actual results to be materially different from those expressed or implied by the forward-looking statements may include without limitation the ability to obtain regulatory, shareholder, and security exchange approvals; the ability to satisfy conditions precedent; the ability to obtain applicable exemptions from prospectus and registration requirements in connection with the listing or the issuance of securities of A2 Gold Corp.; the ability to complete milestones; the ability to obtain qualified workers, financing, permits, approvals, and equipment; changes in the commodity and securities markets; decisions respecting whether or not to pursue the transactions made by A2 Gold Corp. or the other parties with which A2 Gold Corp. is interacting; non-performance by contractual counterparties; and general business and economic conditions. Forward-looking statements are also based on a number of assumptions that may prove to be incorrect, which may include without limitation assumptions about: general business and economic conditions; that applicable approvals are obtained; that conditions precedent are satisfied; that exemptions are available and employable by A2 Gold Corp.; that milestones are completed; that qualified workers, financing, permits, approvals, and equipment are obtained; that market conditions continue; that decisions of A2 Gold Corp. and third parties are made that are in line with such forward-looking statements; that contractual counterparties perform their obligations as required; and that A2 Gold Corp. is able to locate sufficient financing for favorable ongoing operations.

The foregoing lists of factors and assumptions are not complete nor exhaustive, and A2 Gold Corp. undertakes no obligation to update any of the foregoing except as required by law. Most of the forward-looking statements contained in this presentation are collected from other disclosure sources of Columbus Gold Corp. and of A2 Gold Corp., including without limitation news releases, information circulars, technical reports, and other regulatory and securities exchange filings. A2 Gold Corp. recommends and expects that you will review the applicable forward-looking statement disclaimer language in such original sources for additional information on the forward-looking statements contained in this presentation.

Reference to gold resources are Inferred Resources. Please see NI 43-41 entitled Updated Resource Estimate And NI 43-101 Technical Report, Eastside and Castle Gold-silver Property, Esmeralda County, Nevada July 30, 2021.

# Nevada Growth Story with Multiple Catalysts in 2026

## FLAGSHIP EASTSIDE GOLD-SILVER PROJECT

- 1.4Moz Au & 8.8Moz Ag (Inferred)
- 30,000m RC drill program underway | 2,500 Diamond Core Program underway for resource expansion

## STRATEGIC ACQUISITION OF TAYLOR PROJECT

- 117 km<sup>2</sup> district-scale land package\* +20Moz Ag (NI 43-101, SRK 2018) at \$30 Ag prices
- Former producing antimony mines on site
- Permitted with infrastructure + water rights

## WORLD-CLASS TEAM

- Track record of 8+ mines built in Nevada
- Former Newmont, Hecla, Eldorado leadership
- Expertise across epithermal + Carlin + porphyry systems

## STRONG STRATEGIC BACKING

- Kinross Gold (9.9%) + technical collaboration
- 35% insider ownership, tight capital structure

## FULLY FUNDED GROWTH STRATEGY

- Strong treasury to execute 2026 drill programs
- Positioned for resource growth + PEA

## CLEAR CATALYSTS

- Ongoing 30,000m drill results (2026)
- Resource update
- Path to Preliminary Economic Assessment (PEA)



**WE ARE IN ONE OF THE BEST MINING JURISDICTIONS IN THE WORLD**

# Nevada's New Mining Renaissance

5<sup>th</sup> largest gold producing region in the world – not only gold but copper, zinc, molybdenum, cobalt and silver

Majors working in Nevada include Kinross, Centerra, Anglo Gold, Agnico Eagle, Newmont and Barrick





# Our Strategic Partner in Nevada



## STRATEGIC PARTNERSHIP

Kinross Gold owns a 9.9% stake in A2Gold and is a valued strategic advisor. Kinross has invested in various stages of A2's exploration programs

Kinross forms part of the A2Gold Technical Committee and meets at least once per quarter, sharing information across our projects

Kinross' Round Mountain Mine, the largest open pit gold mine in the world, is across the valley from Eastside with similar geological characteristics

Kinross and A2Gold share various technical personnel between projects

CAPITAL STRUCTURE

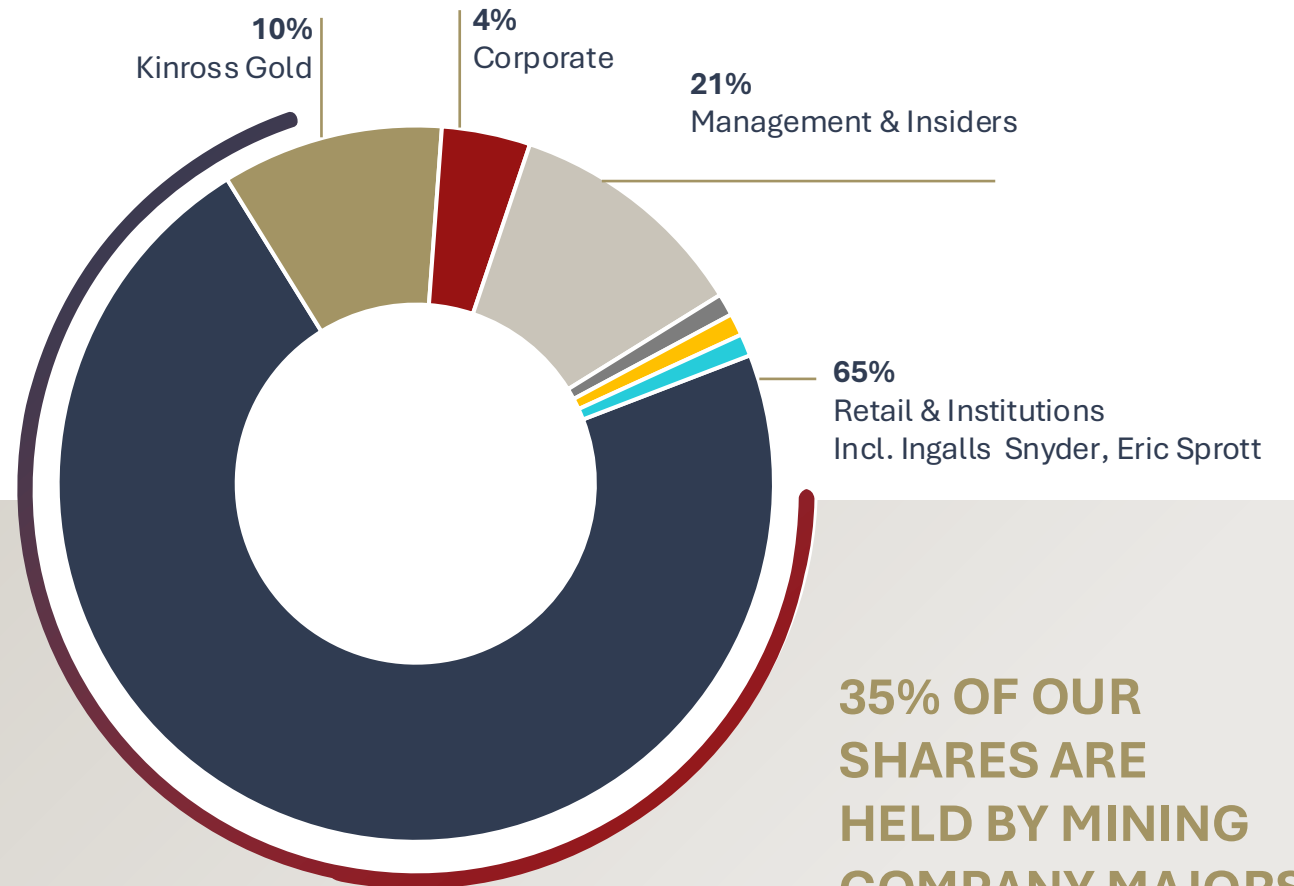
# Strong Shareholder Base

TSXV:  
**AUAU**

OTCQX:  
**AUXXF**

February 2026

Common Shares	104,234,378
Warrants	15,759,022
Options	4,325,000
RSUs	3,310,000
<b>Fully Diluted</b>	<b>127,628,400</b>



**35% OF OUR SHARES ARE HELD BY MINING COMPANY MAJORS AND INSIDERS**

# Strong Management Team & Board

A team that has made numerous discoveries and has put into production over 8 mines in the State of Nevada



**Norm Pitcher**  
**Chairman & Director**

- Former President of Eldorado Gold
- Current Director of Ensign Minerals
- Former CEO & President of Mirasol Resources
- B.S. in Geology



**Peter Gianulis**  
**CEO & Director**

- Former Partner of Salomon Brothers Hedge Fund Group
- Manager of Carrelton Asset Management
- 6 exits over 20 years including Hathor Exploration, CGA Mining and Northern Orion
- M.B.A. Cornell University with B.S. University of California at San Diego



**Sean McGrath**  
**CFO**

- 20+ years experience in financial and capital markets in Canada
- Former CEO of Oregon Energy



**Shawn Nichols**  
**Director**

- 30+ yrs experience including Sr. Investment Counsel & Assistant Corporate Secretary of Citibank Canada
- Former Director of Capital Markets – Scotia Bank
- Member of Law Society of Upper Canada



**Javier Reyes**  
**Director**

- Led turn-around of Luca Mining in 2020-Present
- Founded Antares Capital and Credipresto. Former CEO of Accendo Banco
- Executive M.B.A. from Harvard University
- B.A. and Masters in Economics and Finance from ITAM (Mexico)

# Technical Excellence

Expertise, Collaboration and Vision

Most experienced geological team in Nevada



**John Marma**  
VP Exploration

- 25+ yrs Nevada-focused geologist
- President, Chief Executive Officer, and Chairman of White Pine Metals
- Multi-deposit expertise (Carlin, epithermal, porphyry)
- Ex-Hecla, Newmont, Klondex
- Midas Mine discoveries



**Gabe Kassos**  
Chief Geologist

- 20+ yrs gold exploration & brownfields growth
- Ex-Equinox, Newmont, OceanaGold
- Carlin Trend & Long Canyon experience
- Proven mine life extension track record



**Andy Wallace**  
Head Geologist

- Cordex Exploration (9 Nevada discoveries)
- Key deposits: Marigold, Lone Tree
- Full mine lifecycle experience
- Major contributor to U.S. gold output



**Pete Chapman**  
Sr. Geologist

- Supports targeting & drill execution
- Geological modeling & interpretation
- Contributes to resource growth



**Jon Vinson**  
Logistics Manager

- Leads field operations & drill programs
- Manages teams & contractors
- Executes exploration strategy

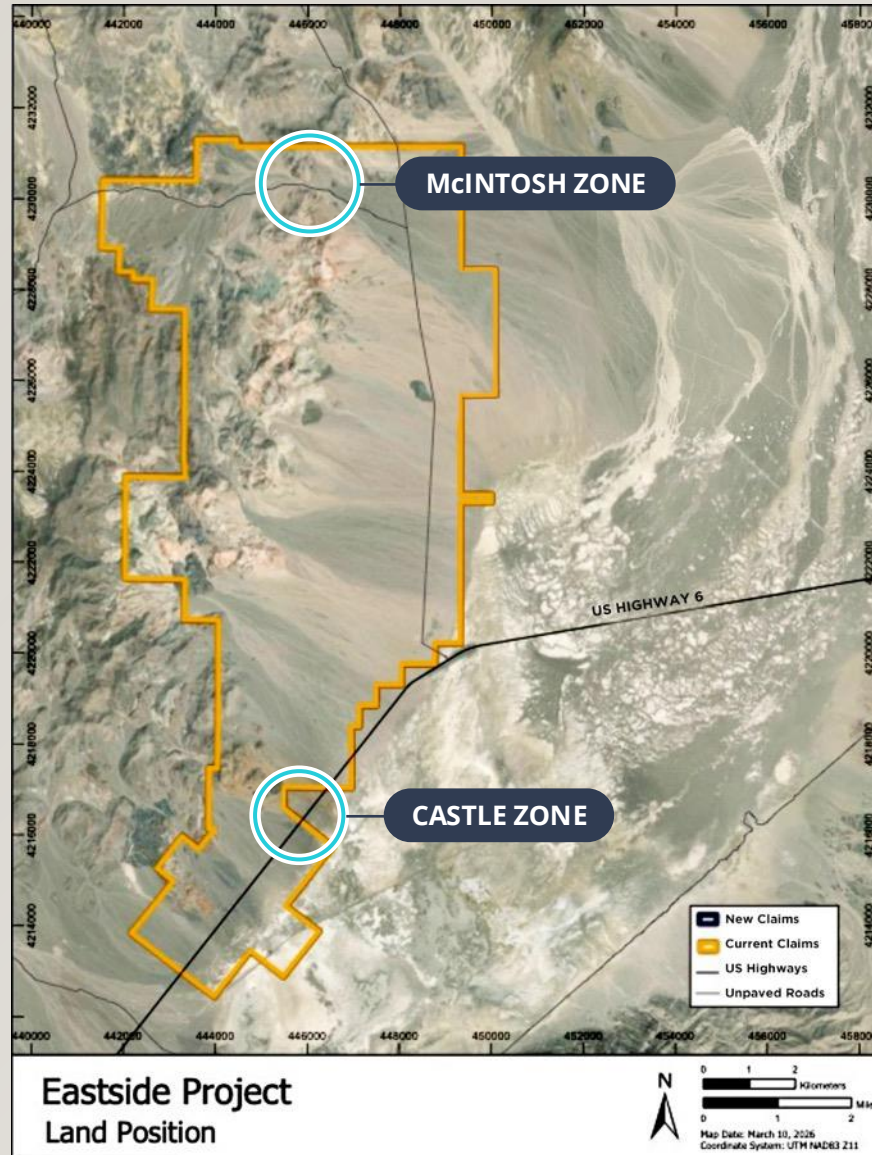
FLAGSHIP ASSET

# Eastside Project

100%  
Owned

92 km<sup>2</sup>  
Project area

Contains inferred resources of:  
**1.4 million oz gold**  
**8.8 million oz silver**  
with material resource upside



**Two identified resource areas** known as the McIntosh zone and the Castle Zone – 70,000 metre drill database

**World-class infrastructure** with water wells, electricity, highways and skilled labor force

**Oxide deposit** amenable to open-pit heap-leach mining (per NI 43-101)

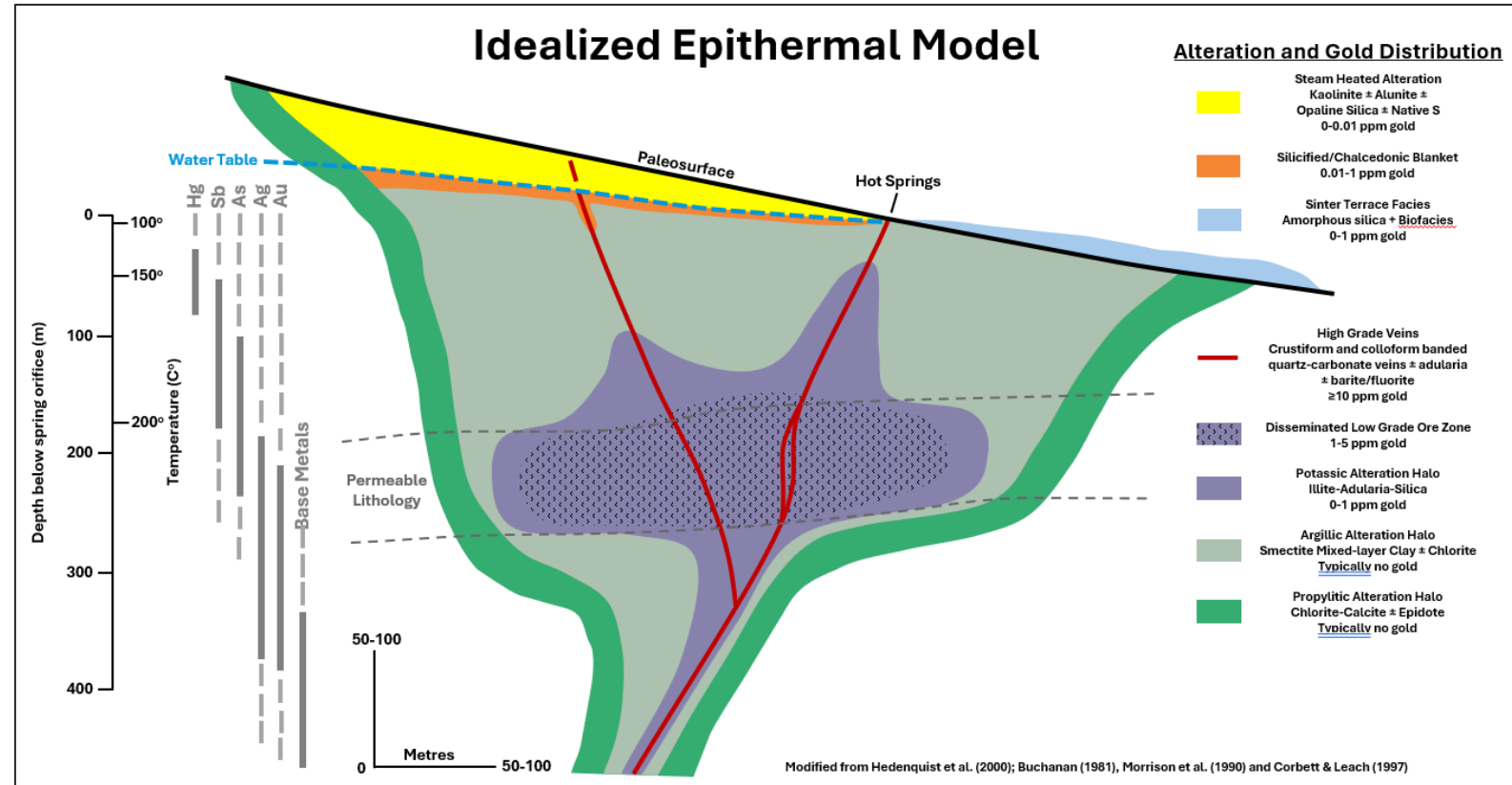
Significant expansion potential throughout Eastside district - **less than 18% of Eastside has been tested**

**Exciting new high-grade zone discovered** below proposed pit shell - potential combination open pit/underground development

**30,000 METRE DRILL PROGRAM UNDERWAY**

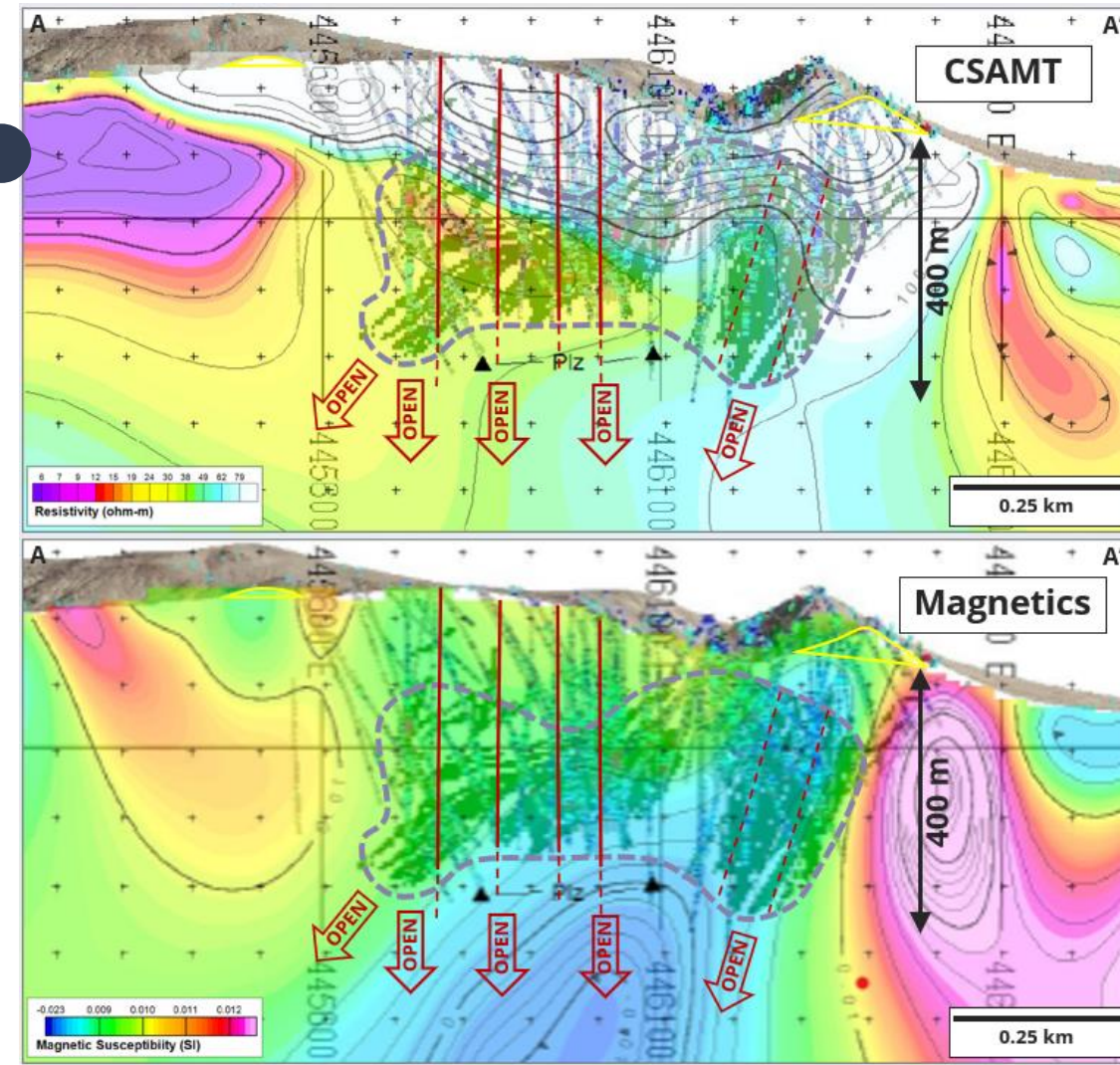
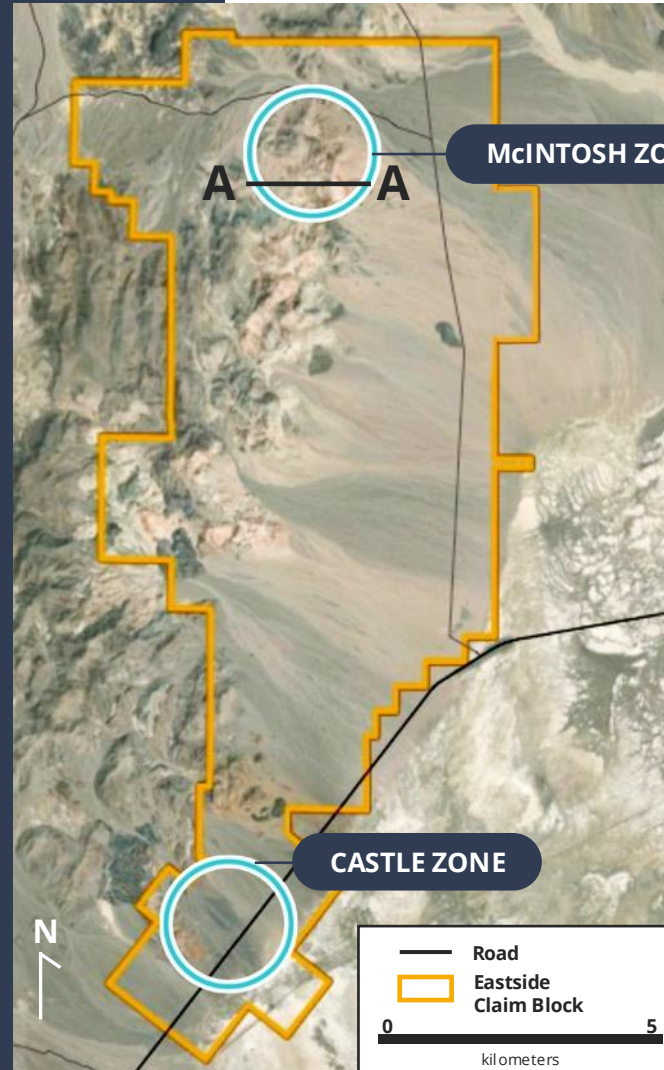
# Eastside Project

- Typically hosted in volcanic rocks
- Forms in shallow, low-temperature environments
  - 0-1.5 km depth; 150-300°C
- Strong structural controls
  - Veins, stockworks and breccias
- District alteration zones
  - Silica, adularia ± alunite surrounded by clay
- Metal zoning patterns
  - Au-Ag show vertical/lateral zoning with base metals increasing with depth
- “Bonanza” grade deposits
  - Can host high-grade Au-Ag veins



# McIntosh Target

- Textbook epithermal alteration
- Low-grade disseminated gold associated with silica and veinlets; Open in all directions
- High-grade vein potential at depth and along strike



# Upside Potential

## McIntosh Target

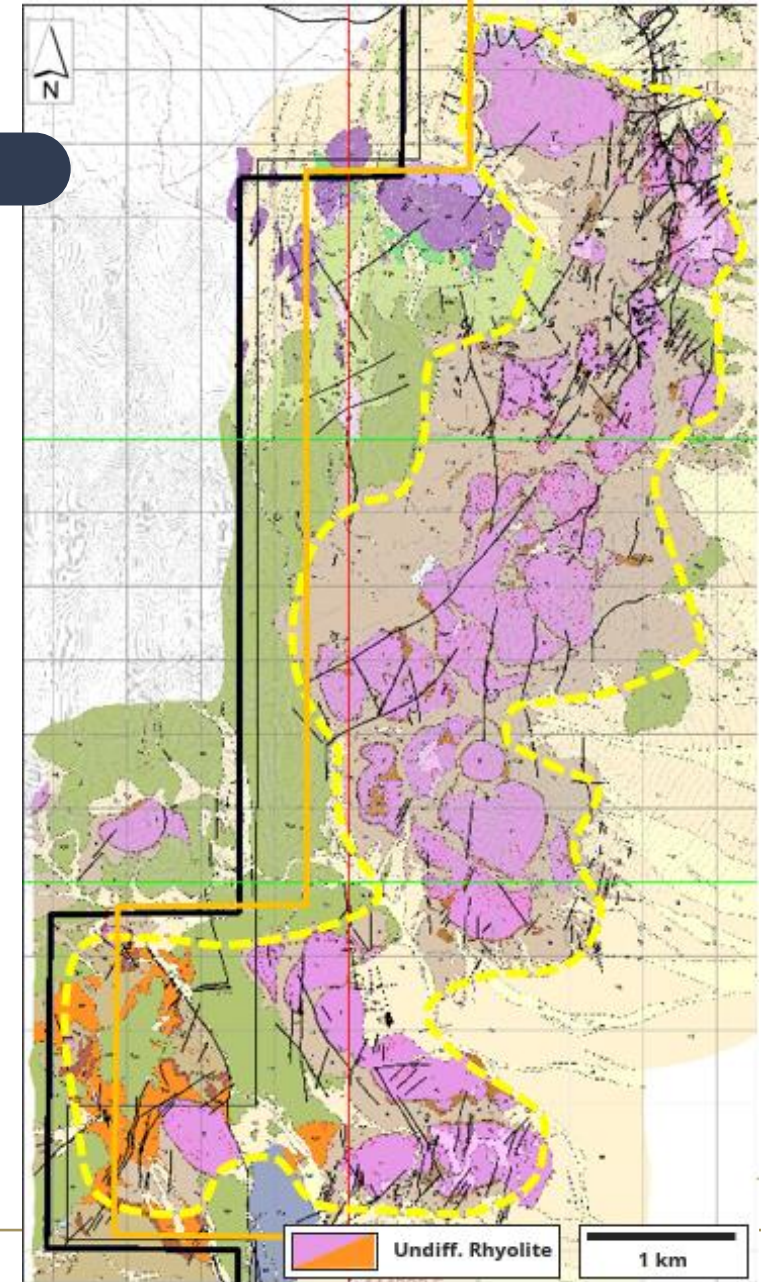
- Open for expansion in all directions and at depth

## Castle Target

- Open for expansion in all directions and at depth

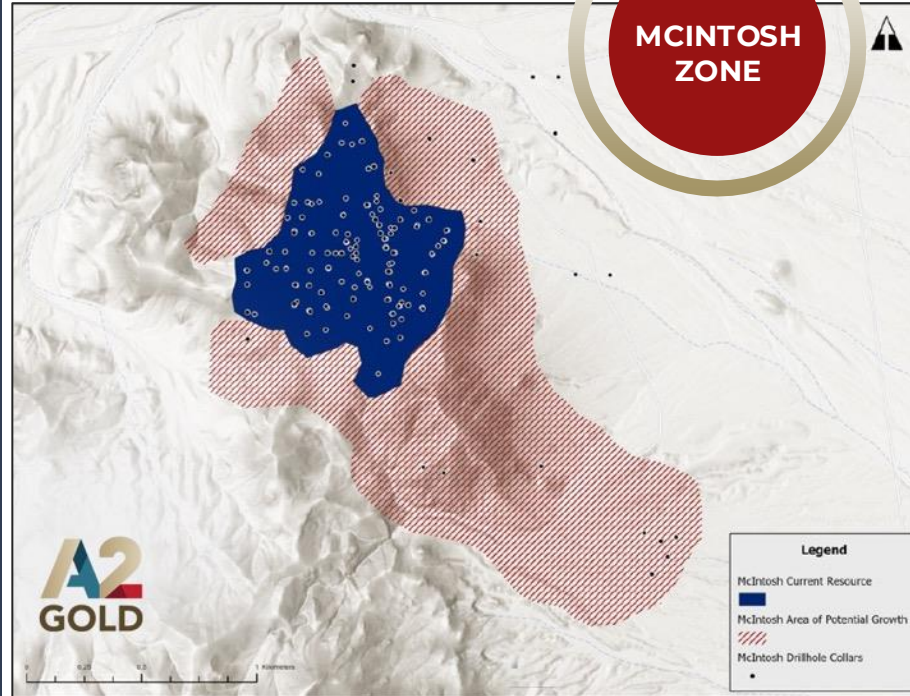
## District Targets

- Over 9 km of strong, steam heated acid leach and argillic alteration between McIntosh and Castle with minimal drill testing
- Additional blind targets under pediment defined by geophysics



## EASTSIDE PROJECT

One of the most exciting new gold/silver discoveries in the region



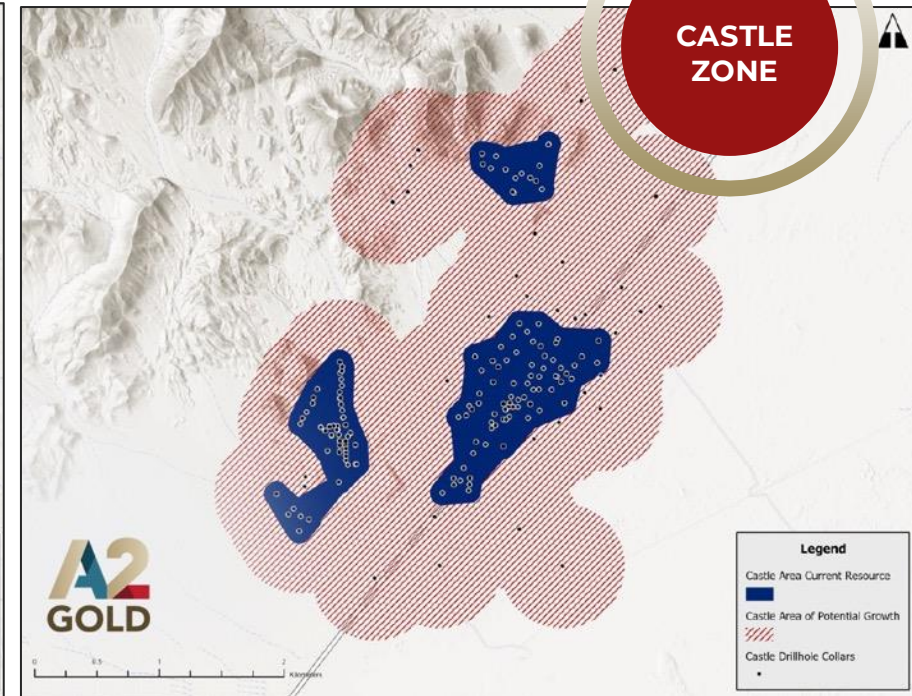
High Grade Zone discovered in late 2021:

**Hole 243 – 2.6 g/t over 148 m**  
(including 21.9 g/t over 14m)

**Hole 239 – 39 g/t over 3m at bottom of hole**

**Hole 245 – 3.4 g/t over 15.2m**

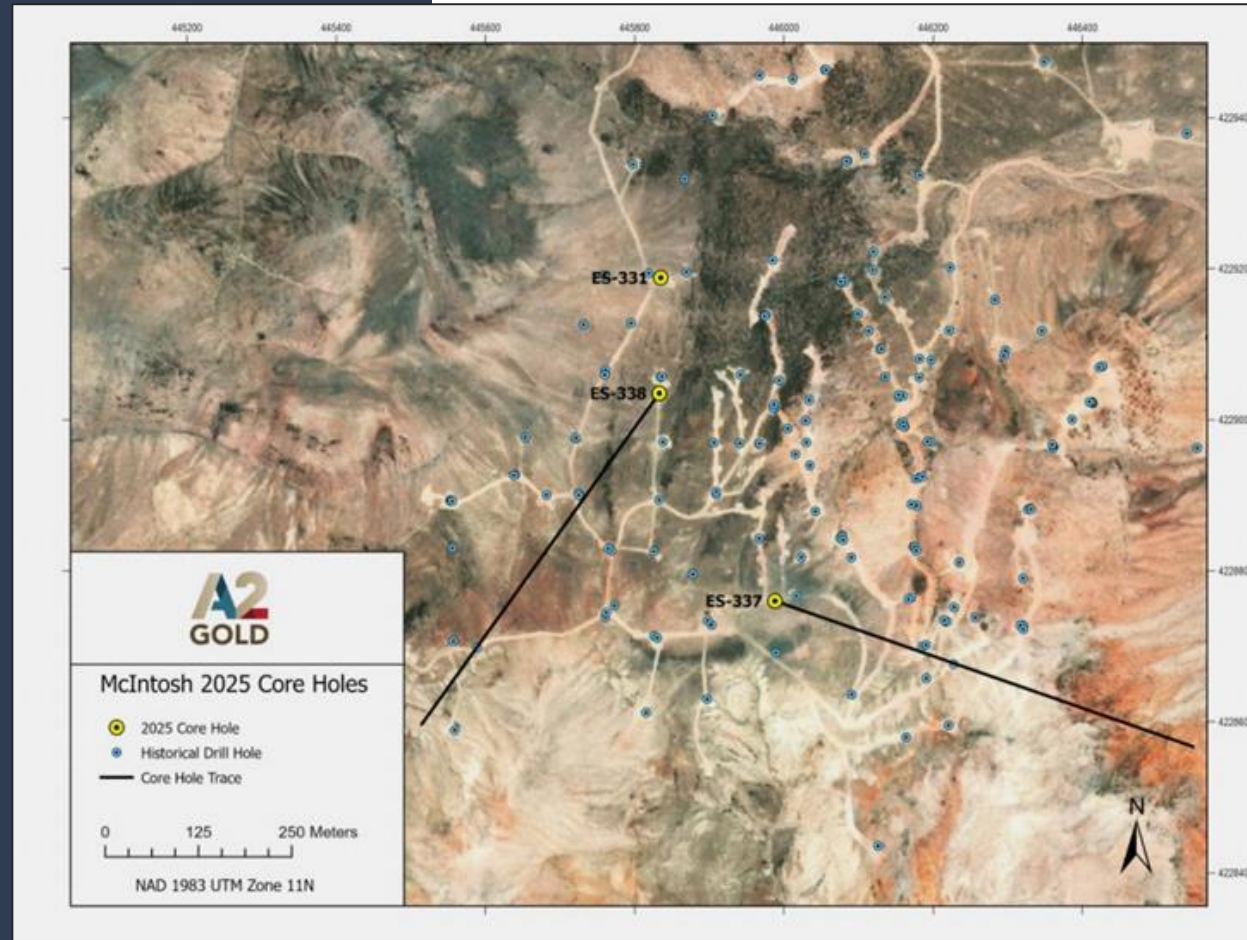
Gold and silver deposit defined over 1.5 km in a north-south direction, 700m wide (east-west) and 500m in vertical extent.



The Castle Zone lies at the south end of the Eastside Project and contains the abandoned Boss Mine and the undeveloped Boss, Berg, Black Rock and Castle Deposits

With the significant silver discovered in recent drilling, silver will play an important role in the future development of Castle

# 2025 Drill Results



## Highlights

- Results from three recently completed core drill holes, continue to demonstrate the scale, continuity, and resource growth potential of the Eastside mineral system
- **2.9 g/t Au and 9.8 g/t Ag over 20 metres** (starting at 430m)
- ES-331 and ES-338 showed significant and consistent mineralization in the holes
- **1.14 g/t Au and 16.3 g/t Ag over 16.8 metres** (from 352 metres), including 5.0 g/t Au and 26.4 g/t Ag over 3.1 metres (from 358 metres).
- Gold and silver mineralization was extended down to 480 metres vertical depth

# 2026 Drilling

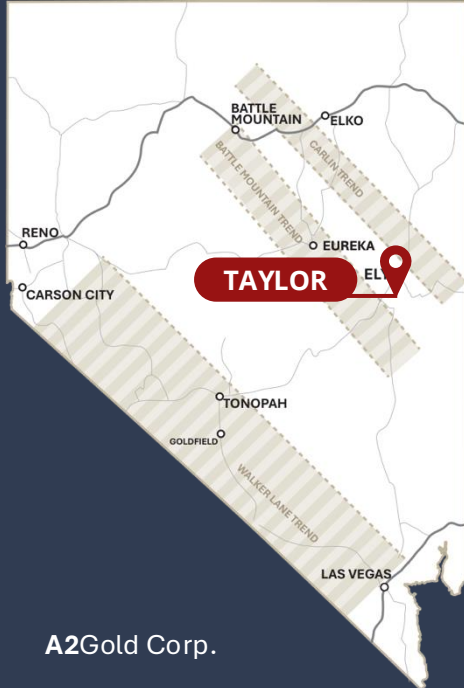
**30,000-metre RC drill program underway, with 3 main goals:**

1. Infill drilling at McIntosh with the goal of increasing grade and ounces with the goal at Castle is connect existing sub-zones
2. Step-out drilling at both McIntosh and Castle to expand the mineralized footprint
3. Testing high-priority exploration targets generated from our recently completed, project-wide geophysics program.



# Taylor Project

- 117-sq km land package in Tier-1 Nevada jurisdiction
- Permitted and bonded to drill
- Water rights, electricity and substation, robust road network



## District Scale Optionality

### GOLD / ANTIMONY

- Internal gold estimate of ~100k AuOz
- Surface Au mineralization +0.1 g/t over 10 km
- Shallow and oxidized

### SILVER

- NI 43-101 Mineral Resource of +20M AgOz (SRK 2018)
- Open in all directions
- Shallow and pre-stripped pit

### CRD

- Extensive surface signature of high-grade mineralization, like 187 oz/t Ag, 3.2% Cu, 6.1% Pb, 2.2% Zn, and 1.5% Sb
- Historic Ag-Pb-Zn production
- Untested at depth

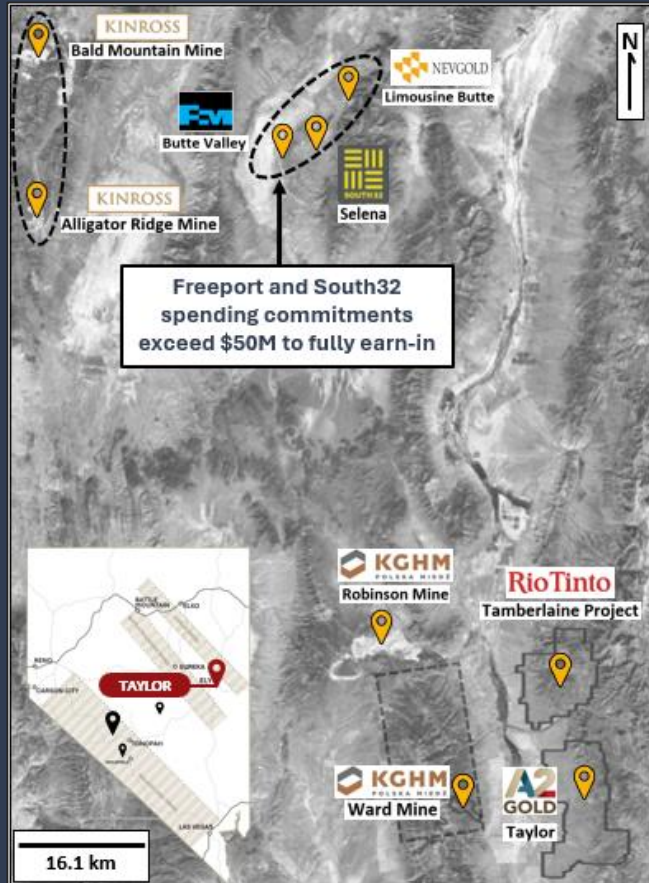
### PORPHYRY / SKARN

- Robust geophysical signatures supporting targets
- Multiple intrusive phases including Eocene and QSP altered Jurassic dikes some with Au-Cu-Hg bearing veinlets



# Taylor Project

## Neighboring Projects in the Area



### KINROSS

#### Bald Mountain & Alligator Ridge

- Discovered in 1869 as a silver district; Historic production of Ag, Au, Cu, Sb and W
- Porphyry with distal CRD
- >4M ounces of gold equivalent,
- Bald: Quartz monzonite, Jurassic 159 Ma; Ordovician Pogonip-Cambrian Windfall
- Alligator: Devonian Guilmette – Mississippian Chainman
- Eocene dikes



#### Butte Valley

- Falcon Butte JV w/ Freeport-McMoRan
- Porphyry system likely drove mineralization at Selena and Limousine Butte
- Cretaceous with Eocene overprint



#### Robinson Mine

- 13 miles northwest of Taylor
- Porphyry: Copper, gold, silver, molybdenum
- In production since 1867 with intermittent hiatuses, > 5B pounds of copper and >3M ounces of gold
- 180% increase in mineralization footprint due to extension
- Quartz Monzonite, Cretaceous (111Ma)
- Devonian Guilmette – Mississippian Chainman
- Eocene dikes



#### Limousine Butt

- ~300k ounces of gold
- Distal gold mineralization; Devonian Guilmette – Mississippian Chainman



#### Selena

- Ridgeline Minerals JV w/ South32
- CRD/skarn mineralization; Devonian Guilmette – Mississippian Chainman



#### Tamberlaine Project

- 2 miles north of Taylor
- Active exploration since 2017
- Recent drill program resulting in an increase in land position



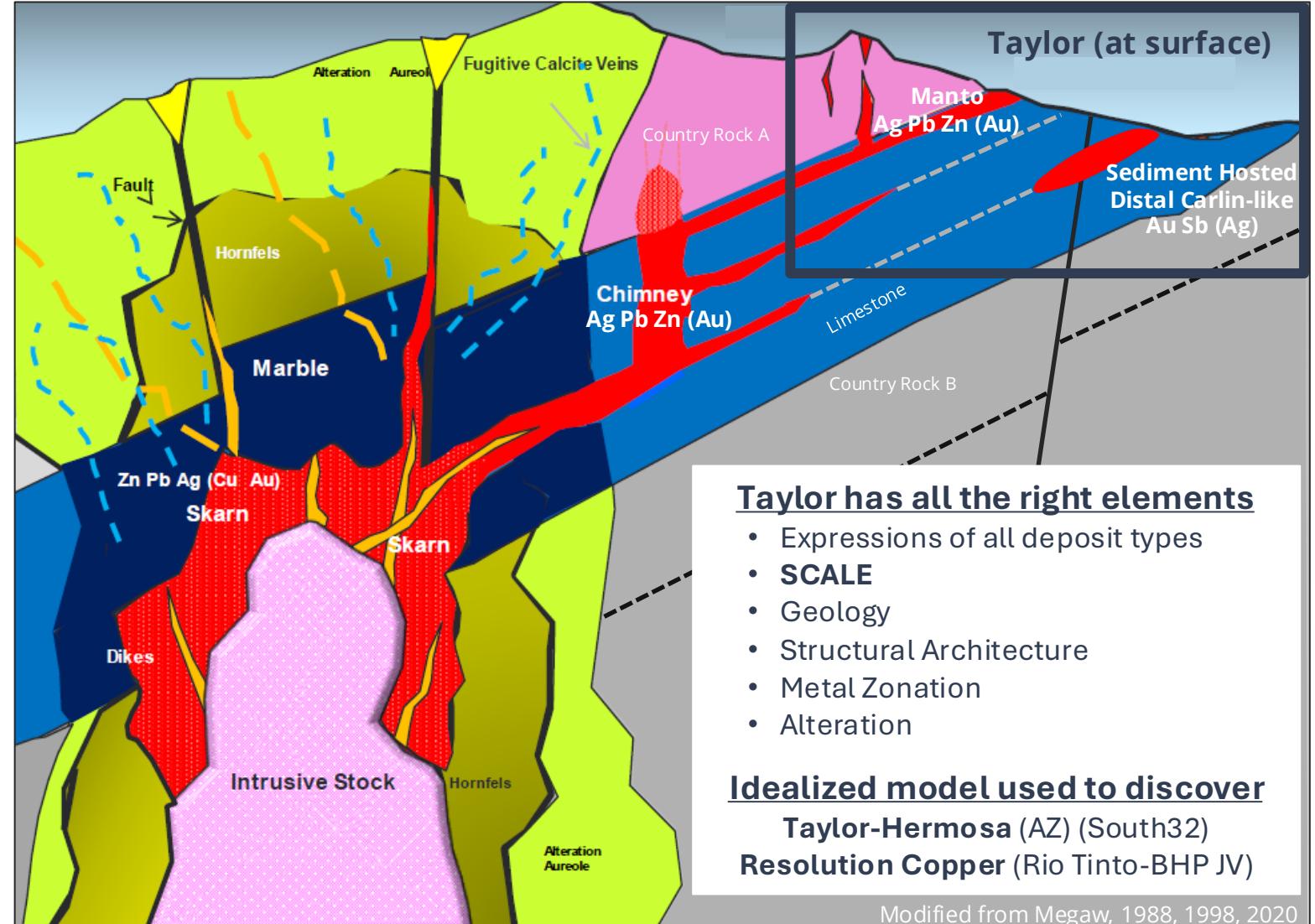
#### Ward Mine & South Egan Range

- 6 miles west of Taylor
- Intermittent production between 1866 to 1990's
- CRD and skarn with porphyry: Silver, lead, zinc, copper
- >400,000 tonnes of Ag-Zn-Pb-Cu produced with >1M tonnes still in reserve
- Mineralization potential not fully evaluated due to depth constraints

# TAYLOR PROJECT

- Driven by magmatic porphyry center
- **Predictable zoned metal distribution**
  - Porphyry center (Cu-Au-Mo)
  - Skarn development at intrusive-carbonate contacts; Typically, *high-grade* (Fe-Cu-Au-W)
  - Carbonate Replacement Deposits (CRD) form along structures and lithological contacts (mantos and chimneys) (Ag-Pb-Zn-Cu±Au)
  - Distal Gold ± Antimony occur at greatest distance as veins, jasperoid, breccias, or disseminated
- **Strong structural controls**
  - Regional faults and lithological contacts focus and localize mineralization
- **District-Scale Potential with large hydrothermal footprint**
  - Reactive carbonate rocks are critical for CRD and distal gold mineralization
- **Exploration and Vectoring**
  - Changes in metal ratios, alteration assemblages and structural pattern recognition key to vectoring

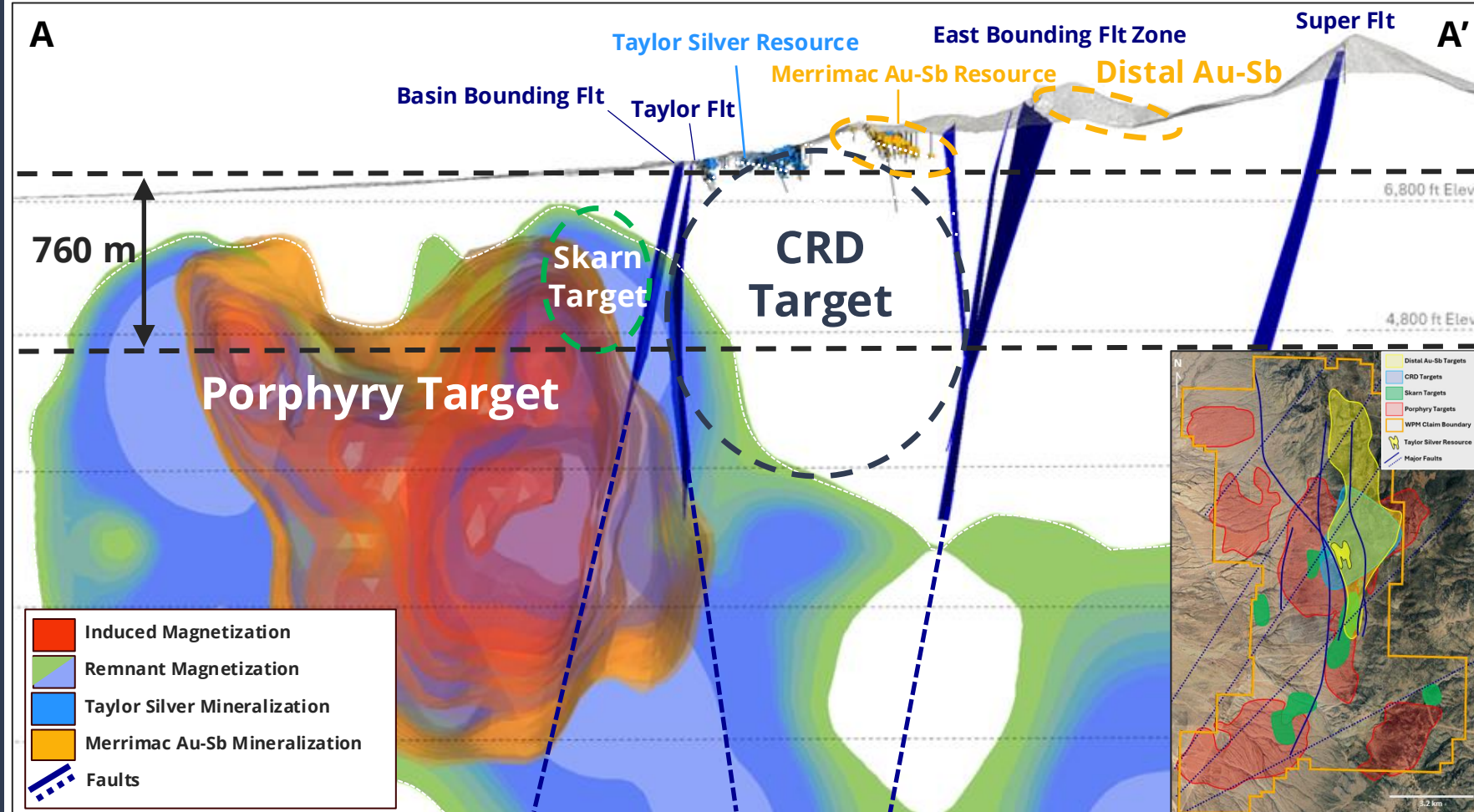
## Idealized Distal Gold-CRD-Skarn-Porphyry Model



# TAYLOR PROJECT

## Shallow Potential for Distal Gold-CRD-Skarn-Porphyry

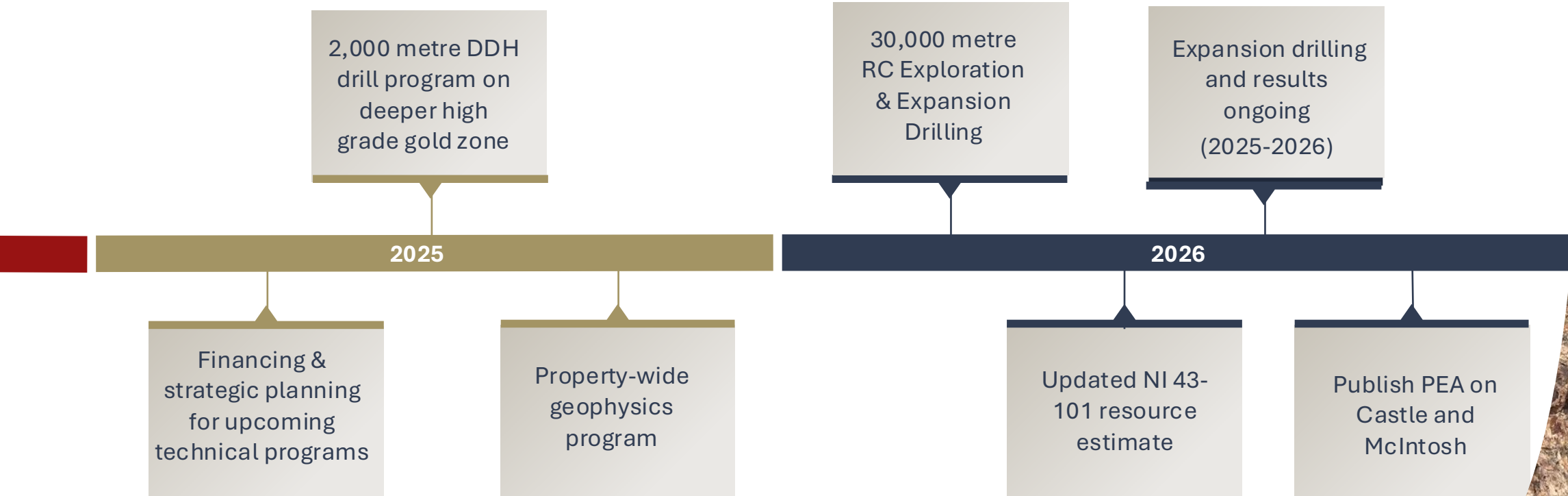
- Approximately 96% of historic drill holes have tested *only the upper 152 m*, leaving significant potential at depth
- *Silver and gold-antimony mineralization is vertically zoned around anticline apex*
- Approximately 1,370 m of favorable stratigraphy remains untested between and adjacent to known mineralization and the skarn-porphyry targets
- Potential for shallow porphyry mineralization to the west and at depth
- A variety of Eocene and Jurassic age dikes identified across the property



**MAJOR  
CATALYSTS  
AHEAD**

# Our Next Steps

Expand existing resources, further explore high grade potential, explore numerous additional targets and advance Eastside to PEA level and beyond





**A2 Gold Corp.**  
591 N. Main Street  
Tonopah, NV USA, 89049

Email: [info@A2gold.com](mailto:info@A2gold.com)



**Thank You**

TSXV: AUAU | OTCQX: AUXXF | [A2Gold.com](http://A2Gold.com)